



The Cutter

Quarterly Newsletter

August 2017

csdaa.com.au





Presidents Message





In this Issue...

Presidents Message
Whats On
NT General Meeting
Job Story
New Equipment
Training report
Advertising



What's On...

September 2017

October 2017

November 2017

CSDAA eNewsletter

Current Members

NSW

Basic	9
Distributor/Supplier	4
Premium	14

NT

Premium	1
---------	---

QLD

Basic	9
Premium	11

SA

Basic	1
Distributor/Supplier	3
Premium	3

TAS

Basic	1
Premium	4

VIC

Basic	5
Distributor/Supplier	7
Premium	17

WA

Basic	4
Premium	6



This is the World of Concrete—the only annual international gathering place for more than 60,000 concrete and masonry professionals who look to WOC—the first and most important industry event of the year—for the technology, supplies, equipment and connections that they need to meet demand. Exhibit here and make authentic connections, write orders with qualified decision makers and watch your bang/buck ratio go through the roof.

2018 WOC Exhibit Hall Hours
Tuesday, January -Thursday, January 23-25
9:30 am -5:00 pm
Friday, January 26 9:00 am - 12:00 pm

[Click Here for
Exhibitor Info](#)



What makes a CSDAA member different?

CSDAA members are experts in their field. They have the knowledge and experience to do the job thoroughly, and safely.

CSDAA members are Operating Contractors and Suppliers/Manufacturers of equipment servicing the concrete sawing and drilling industry.

CSDAA members remain informed of the latest information in cutting technology, and have access to the most effective and technologically advanced equipment available.

CSDAA members are provided with services that support industry best practice, including industry and business mentoring, the CSDAA online manual, and links with professional industry training programs. We are working to help our members become sustainable.

When you engage a CSDAA member contractor you'll experience the security of knowing that you're in great hands.

Become a Member Today!



DIAMONDS MAGAZINE

DIAMONDS

OFFICIAL PUBLICATION FOR THE CONCRETE SAWING AND DRILLING ASSOCIATION OF AUSTRALIA

ISSUE 13 MARCH 2017



ISSUE 13 FEATURES

Convention Centre Demolition

Brokk demolition robot story

Case study Online Concrete Cutting

Say Nammour: Taking flooring to the next level
EPA Classification – 10 years in the making

[DOWNLOAD HERE](#)

Email Mario for your hardcopy
mario@advancedsawing.com.au

CSDAA Quarterly Newsletter

The Cutter Industry Newsletter is emailed out every quarter. It is your chance to connect with the industry, share job stories, relevant industry news, promote people and share the wins!

- Emailed every February, May, August & November.
- Sponsored Advertisements.
- New Equipment.
- Training updates.
- Job Stories & more.

For all articles & advertisements
Contact Tionie Bonacci
0431059115
tionie88@gmail.com

**Don't Forget to Print this
Copy for Your Office**

NT General Meeting



Circular Wire 1100mm Job Story

A North Sydney job required two round penetrations 1100mm diameter, as 1100mm diameter holes really are not that common.

Sourcing a 1100mm core bit from a supplier would probably have costed about \$2000, including a time delay, so contractor Diacore decided to circular wire saw the penetration.

The advantage of already having the set up and the wire, made this job very cost efficient and profitable. The job including set up and cutting, the two 850mm x 250mm thick was completed in half a day.

Achieving both satisfaction for the client and contractor.



Smooth Operator

Send me a job picture for the Newsletter!



Me: What was this job?

Nalen: I found a slab so I played Connect 4.

Me: With who?

Nalen: Myself.

Me: *Rolls Eyes* Whos responsibility is it to remove the blocks, you or the client?

Nalen: I just leave them there and drive away.

Me: Thanks Nalen -_-

Nalen from Advanced Sawing & Drilling having a laugh.

Makinex Hose2Go Testimonials

The Hose 2 Go is a constant pressure water supply unit which is different to every other product on the market because it provides a constant water flow without the use of a pump, battery or electronics. A perfect tool for concrete cutters and core drillers. We sent Advanced Sawing and Super City Concrete Cutting (NT) a Hose2Go to test in their businesses and following is their feedback.



**HOSE
TO GO**
Constant Pressure
Portable Water
Supply Unit



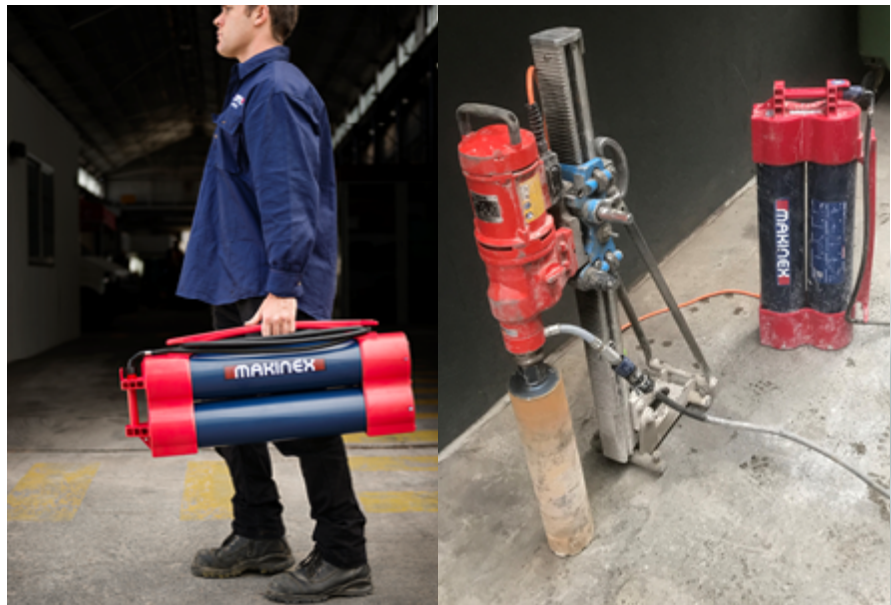
Advanced Sawing

"It's easy to use because you don't have to pump it. It's ready to go once you fill it up. Much better than the other water pumps because it's light, holds more water and is highly portable."

Super City (NT)

"Super and easy to get the perfect water flow whether it's high flow or low flow, you control it."

Watch the video



Both Advanced Sawing and Super City (NT) have since purchased these Hose 2 Gos which is a testament in itself!

If you would like more information about the Hose 2 Go

Email [Stuart Reynolds](mailto:Stuart.Reynolds@makinex.com.au) or visit: <http://www.makinex.com.au/products/hose-2-go>

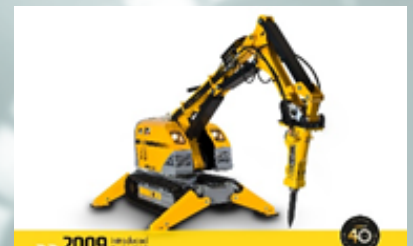
Brok Robot History 1976 to 2017

In 1976, the demolition business struggled with dangerous work environments and inaccessible demolition sites. A dream of higher efficiency and safer conditions is born. Visionaries and engineers joined forces and started working on a solution. For months they worked to conceive, build and test the world's first remote controlled demolition machine.



Every year since, our demolition machines have changed the working conditions for thousands of people around the world, and they've provided critical service when it was needed the most.

Brokk machines helped to clear Ground Zero after 9/11. They assisted in containing the nuclear disaster at Fukushima NPP after the devastating tsunami. Our goal has always been to make a difference and we're doing it, every day.



Brok Robot History 1976 to 2017



During these 40 years, we've gotten to know our customers and gained an understanding for all the businesses and environments they operate in. We never stop searching for ways to improve our products and new ways for you to use them. But the purpose stays the same: we want your work to be safe, efficient, powerful and profitable.

Humans have always been explorers and by experimenting and going places no one has ever gone before, that's the spirit that drove Brokk's founders to create the first remote controlled demolition machine. And it's the spirit that continues to drive us to improve and grow.



Research & development plays a big role to make the Brokk better, more durable, autonomic and efficient. Applying new technology, experimenting and testing out new solutions, we learn and find new possibilities.

Can we improve the manoeuvrability by changing the interface? What would it take to make the machine do more of the work by itself? We set no limits as we delve into the search for answers.

For 40 years we've been transforming the demolition business, and 40 years from now we'll still be changing it.

NEW PRODUCTS

230V Single Phase Ringsaw



Ring Saw HRE 400★★★

Single phase 230V, 15amp
Cuts to 317mm

Exceptional power transfer and no slippage thanks to patented drive roller system



2,8kW electric motor with fully integrated electronics



Unique Cutting depth up to 317mm



230V Single Phase Pre-cut Handsaw



Hand Saw HBE 350★★★

Single phase 230V, 15amp
Cuts to 125mm

Integrated dust extraction connection for dust-free clean working



2.8kW electric motor with fully integrated electronics



355mm saw blade with cutting depth up to 125mm



FOR MORE INFORMATION:

info.au@tyrolit.com

1300 TYROLIT (897 654)

or

www.tyrolit-construction.com.au

TYROLIT

Hilti New Products

Hilti DD250

Heavy-duty diamond drilling system for rig-based coring in a very wide diameter range of 12-450 mm. Available in 1¼ chuck.



Hilti DD WMS 100

Water management unit for the supply of water, plus collection and filtration of waste water from diamond drilling systems



Visit <https://www.hilti.com.au/>

Or contact Ben Shield

Ben.Shield@hilti.com

0477 600 250

Recognising Kevin “Porky” LeGuier



Kevin started as a concrete cutter on the 1st October 1970 and has remained a highly regarded member of the Concut family for 47 consecutive years. He was recommended for the job by his brother Graham, who was working there at the time.

Located at 23 Rouse St Port Melbourne, memorable jobs include coring for strengthening rods on the Westgate bridge, deep angled coring on the Geelong overpass, wide blade sawing at Avalon airport and nightworks in the depths of winter coring for field lighting at both Hobart and Launceston airports.

Kevin is a loving father of two beautiful daughters and proud grandfather of 4 amazing grandchildren.

Kevin is very highly regarded by all at Concut and the industry. His impeccable workmanship, wealth of knowledge and great sense of humour have earned him the respect of all lucky enough to work along side him, or who have learnt the trade under his instruction.

Kev is still the first one to work in the morning, and he always has the cleanest van in the fleet, and not a day goes by when one of our customers says to me “I want you to send Kev out to me”

Thanks Kev!

If you have a staff member you would like to recognise, email info and photos to tonie88@gmail.com

Recognising Murray Williams

Murray Williams has been working for Supercut for 35 years. At age 69, he is the most requested operator for saw cutting jobs, clients love him!

Murray is married with beautiful children and lovely grandchildren to keep him occupied.

His most memorable job was cutting up the wooden bridge at Holbrook with wood saw blades.

Love your work Murray!



Training Report





Introducing the new **HRE 400 - Single Phase Ringsaw**

1300 TYROLIT (897 654)

A Company of the SWAROVSKI Group

TYROLIT

After 40 years of innovation:

A compact and powerful
demolition robot
with built-in
intelligence



INTRODUCING:
110

In 1976 we promised to give super powers to some of the hardest working people on earth. We've kept that promise by continuously listening to our customers and providing them with innovative solutions year after year. Now we're introducing our latest addition: The Brokk 110. Built to face anything in its way, the Brokk 110 features a new, robust design, more power and Brokk SmartPower™ – an 'intelligent' new electronic system that ensures a more consistent power supply. At the same time, the Brokk 110 is compact enough to go where no demolition robot has gone before.

Discover a more intelligent future at
www.brokkaustralia.com.au

BROKK®

Brokk Australia Pty Ltd | +61 (0)8 8387-7742





2016 Concrete Sawing & Drilling Association Australia.
All Rights Reserved.

Concrete Sawing & Drilling Association - Australia
Level 2, 441 St Kilda Road, Melbourne 3004
PO Box 7622, Melbourne VIC 3004
Phone: (03)9867 0227
Email: info@csdaa.com.au

Next Newsletter
November 2017
Advertising enquiries
tionie88@gmail.com