



DIAMONDS

ISSUE 4 The official Concrete Cutting Industry Association magazine



- | | | |
|---|--|---|
| <p>1 CCIA Mission Statement
Industry Calendar</p> <p>2 President's Report</p> <p>3 CCIA National Convention
& Exhibition 2005, Gold Coast</p> <p>4 How time flies, It's AGM time
again & wow what a success!
Thank You Lloyd Williams</p> | <p>6 Kennards Concrete Care
Power Profiler 2500</p> <p>7 Western Water Treatment Plant</p> <p>10 Plunge Wire Sawing On The
Lane Cove Tunnel Project</p> <p>13 Deep Drilling with the Hilti
DD 200 Diamond Coring Rig</p> <p>16 Blue Circle Southern Cement,
Geelong</p> | <p>19 Pearson Concrete Cutting
Based in Brisbane</p> <p>20 Intercontinental Hotel Sydney</p> <p>23 Cutting Solutions</p> <p>25 CCIA Executive Members</p> <p>26 CCIA Members</p> |
|---|--|---|

CCIA Mission Statement

The mission of the Concrete Cutting Industry Association is to promote the use of professional specialty sawing and drilling contractors and their methods. In support of this goal, our Code of Ethics demands that we pursue the highest standards of safety, quality and integrity. It is also our objective to provide a forum in which members can share their ideas, needs and concerns in a constructive framework to further enhance concrete sawing and drilling technologies.

Objectives as detailed in the CCIA Constitution

To promote, by lawful means, the general welfare and stability of all industries associated with industrial diamond products, manufacture, sale or consumption.

- a. To promote by lawful means, the general welfare and stability of the industrial diamond industry.
- b. To develop and promote industry standards, training and safety.
- c. To promote and encourage the trade and business interests of members of the Association and of persons engaged in or connected with the diamond tool industry.

- d. To foster sound and ethical practice among its members and encourage a high standard of conduct and the highest degree of understanding between members.
- e. To represent the industry in all matters concerning trade requirements and other matters legislated by Government enactment.
- f. To encourage and promote honourable, ethical and good relations between:
 - 1. Members of the Association themselves;
 - 2. Members of the Association and persons, firms and corporations carrying on business directly or indirectly associated with inustrial diamond usage who are not members of the Association;
 - 3. Members of the Association and Local Government bodies, Federal and State Government Departments, and the general public.
- g. To acquire, preserve and disseminate business and trade information, technical knowledge, developments in plant etc., likely to benefit the industry to those engaged in or connected therewith.
- h. To provide a united and stronger voice towards common industry problems and objectives.

President’s report

DESPITE THE GLOBAL UNREST, THE AUSTRALIAN ECONOMY AND BUILDING INDUSTRY ARE IN GOOD SHAPE. CCIA MEMBERSHIP HAS INCREASED BY 28% AND THE PROFESSIONAL CONCRETE CUTTING INDUSTRY IS MOVING AHEAD AT A GREAT PACE.

Times have changed and we, who were once looked upon as labourers who knew how to cut concrete, have now become recognised specialists with the most advanced skills and equipment in the construction industry. How have we all gotten to this point? Education. Learning and innovation have been the key. A large number of us are self taught, but our fast changing industry means we can no longer send raw, untrained operators out and hope they will figure it out. As business owners, we must educate our Operators in a planned and structured way, with an emphasis on the importance of work safety at all times. Our Operators need to know how to assess a job so they can solve unsafe conditions and unforeseen problems on unusual and difficult projects, without resorting to trial and error. The CCIA can provide you with the Training & Occupational Health & Safety Manuals you need to provide your Operators with the best education.

As Company Directors we must supply training to our employees. We are responsible for their actions at all times. We have seen companies taken to court and prosecuted for not supplying a safe workplace, and fined hefty sums of money. Don’t deceive yourself. The buck stops with the company director, even though they might not be directly involved with the projects.

As business owners and managers we also need to keep up with technological advances in equipment as well as in business practices. Use the CCIA to help you with this. There is a wealth of experience within our membership ranks. Network with other members. Remember, talking over a problem with someone who understands our unique industry could bring a solution far more easily, and quicker, than you thought.

The CCIA is here to support us, the members. By joining and using the support network you are supporting the CCIA. Your thoughts and opinions are important to the CCIA. Suggestions on how to improve our Association are always appreciated. Donating a small amount of your time to CCIA business could make a huge difference to our Industry here in Australia.



Greg Mahoney
PRESIDENT

1 | Industry Calendar

9-11 March 2006
Concretetech 2006
Beijing, China

9 -10 March 2006
CCIA Meeting AGM 2006
Gold Coast, Queensland

10-13 March 2006
Stonetech 2006
Shanghai, China

21-23 April 2005
The Stone Show
Melbourne Exhibition
and Convention Centre
Melbourne, Australia

30 April - 3 May 2006
HRIA -Hire & Rental
Gold Coast, Queensland

15-18 May 2006
World of Concrete Asia
Beijing, China

21-24 November 2006
Bauma
Shanghai, China

Building our future together

Invitation...

The Concrete Cutting industry is pleased to extend this invitation to you and your colleagues to attend the National Convention and exhibition 2006 to be held at the Marriott resort Surfers Paradise Thursday 9th to Friday 10th March 2006.

The unbeatable combination of sun, sand and surf together with our central location and superb Marriott Resort facilities should ensure that 2006 definitely provides all the ingredients required for an enjoyable and successful event.

Lucky Door Prize

Two nights at the Marriott Resort Gold Coast, plus airfares for two to Coolangatta to be won at the Gala Dinner.



Marriott Resort 9-10th March 2006 Surfers Paradise

A series of educational and entertaining events have been planned along with a myriad of social networking opportunities to assist you to enjoy your time on the Gold Coast. Including special guest Mr. John Fitzgerald, CEO, Custodian Wealth Builders.

Participating in the 2006 trade exhibition is a range of key suppliers, showcasing the latest innovations in equipment for the Concrete Cutting Industry. With the convention program structured to allow delegates the maximum time to visit these displays, this is an ideal opportunity to catch up on the latest trends and product information

Take this opportunity to meet and greet your old friends and establish valuable new contacts by registering today. I look forward to welcoming you to the beautiful Gold Coast in March 2006.

Greg Mahoney
President CCIA



Please contact Athena Tashevskia to register your interest:
Email: atashevskia@aigroup.asn.au
Phone: 03 9867 0282

How time flies, It's AGM time again and wow what a success!

FOR THE SECOND CONSECUTIVE YEAR, THE VERY IMPRESSIVE MARRIOTT SURFERS PARADISE WAS AGAIN CHOSEN TO HOLD THE ASSOCIATION'S AGM, CONFERENCE AND TRADESHOW.

It was good to see so many new faces this year come and sample what has now become much anticipated event. Mainly due to the huge effort from people such as Greg Mahoney, Stuart Smith and Kristina Flynn and all the hotel staff. I thank you. Membership has been boosted by 28% and the tradeshow has almost doubled in size compared to last year. Suppliers took advantage of the increase in members attending and were keen to demonstrate their advantages to contractors and their employees.

Proceedings commenced on Thursday with the tradeshow open most of the time. Seminars were presented during the day followed by an evening barbeque and drinks by the tropical lagoon pool. The committee met Friday morning but I must say it wasn't bright or early start. Seminars resumed a talk from Barry Brothers and Greg Berry from Berry Wallsawing delivering a presentation on the early beginnings of concrete cutting.

This was then followed by the A.G.M. where we received a very positive response. Lloyd Williams resigned from the committee but will continue to support where needed and will continue to assist Neil Horne with the publication of the magazine. With official proceedings over out came the men in their suits and ties and their ladies were all as stunning as ever. The live band Blue Poppy had the dance floor full, although some of the guys should stick to their normal day jobs (myself included).

The comedian Johnny Garfield had the audience in absolute stitches of laughter with his routine and requests for several encores followed. With dinner and dancing over a few stayers proceeded downstairs to the lobby bar for a few 'light' refreshments to wind up the night. It was good to see everyone at breakfast the next morning although there were a few bleary eyes and dark sunglasses at the table, for some it was time to say goodbye but most made the most of the opportunity to relax and enjoy a massage or laze around the beautiful lagoon pool for the rest of the weekend.

Thank you everyone for your participation and support over the last year and hope to catch up again during one of our state meetings. If not, we'll see you at the 2006 CCIA conference and for those who didn't attend this year make it a must do for 2006.

Thankyou Lloyd Williams

SINCE IT'S ORIGINAL BEGINNINGS AS THE IDAA, THE CCIA (CONCRETE CUTTING INDUSTRY OF AUSTRALIA) HAS GROWN FROM HUMBLE BEGINNINGS TO AN ASSOCIATION WITH MERIT AND RESPECT.

As well as bringing us all together at least once a year, we also get the opportunity to network and learn from each others knowledge. One of the early founders who could see the benefits for everyone involved was Lloyd Williams of Dimas. Lloyd helped to establish what was then the IDAA (Industrial Diamond Association of Australia) serving as President and always actively being involved in its operations, he gave as much time as was needed and formed the basis for the professional image which we all enjoy today.

During the associations AGM in March, Lloyd sadly announced that he was resigning as a member from the Executive Committee, allowing him to concentrate on his business commitments and his constantly growing family. (I mean grandchildren). Although Lloyd will be sorely missed at our meetings he will continue to produce our magazine and I'm sure we will all continue to benefit from his industry knowledge and experience.

Thanks to Lloyd.

Rob East
Executive Committee Member



Lloyd Williams
Managing Director of Husqvarna
Construction Products Asia Pacific.

Sleep Easy. For Three Years.



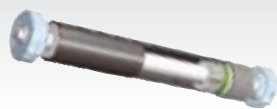
Putting your trust in a conventional blade shaft assembly can be costly. Slurry enters the bearings, damaging the most important components of the saw, costing your thousands in damaged parts, diamond blades, and downtime.

Churchills Diamond Products are the sole Australian distributor of "Mercury Saws". Mercury Saws' new blade shaft assembly eliminates those headaches with enclosed internal bearings housed in a steel tube and a slurry plate that keeps debris and other material out.

They're standard on all Mercury Pavement Saws and what's more, the blade shaft assembly, transaxle, and four-speed gear are backed by a three-year warranty.

Consider it peace of mind.

Available Australia Wide



The blade shaft spindle assembly is fully enclosed and sealed with a continuous oil bath lubrication design.

Churchills Diamond Products Pty Ltd

Victoria 03 9551 0022

Queensland 0408 735 922

New South Wales 0408846 004

Freecall 1800 334 001

Kennards Concrete Care - Power Profiler 2500.

CONCRETE CAN HAVE INHERENT PROBLEMS IF NOT LAID CORRECTLY INCLUDING THE SURFACE NOT BEING FINISHED FLAT AND/OR AT THE RIGHT HEIGHT. THAT'S EXACTLY WHAT HAPPENED WHEN BRUCE POEHLSEN FROM RING US GROUP WAS CALLED IN. THEY FOUND THAT THE SURFACE WAS UNEVEN, WITH HIGH SPOTS OF UP TO 35MM OVER THE 300 SQUARE METRE AREA. FOR THE TIMBER FLOORING TO SIT NICELY, THEY HAD TO SOMEHOW LOWER AND LEVEL OUT THE CONCRETE WITHOUT ANY TOPPING MATERIAL. BRUCE WAS GIVEN A TOLERANCE OF 3MM OVER 3M

The specialists at Kennards concrete care suggested the Schibeci Power Profiler 2500 powered by their new Thomas 255 Hi-flow Skid Steer Machine. This high tech piece of equipment removes up to one inch off concrete and prepares concrete surfaces for the timber laying, as well as removing almost anything from timber, concrete or tiles. This was done DUST FREE with the help of a dust collector hooked in-line with the Schibeci Power Profiler 2500. Once the levels were achieved the Schibeci Polyplaner 3000 from Kennards Concretecare was used on a Dingo to achieve the right texture

Bruce from Ring Us group says he was so fascinated with the strengths of this equipment that the only way he could describe it is to say 'I cant believe its not butter' – he just cant believe its capabilities. " The service of hiring this sort of equipment out is great for the industry, there is only so much contractors can do to serve such a large market, with the availability of this equipment for hire from Kennards Concrete Care, its makes our job so much easier" Bruce says.

That was the main idea of Kennards Concrete Care. Realising the hire of this equipment could save time and labour costs, they decided to open this division and make this high tech expensive equipment available for hire. With staff trained to give advice on the use of this equipment, servicing and various jobs, its really does make the job a lot more efficient, economical and easier.

For more information about Kennards Concrete Care and their equipment available for hire visit:

www.concretecare.com.au or call 02 9906 7188.



Power Profiler 2500

BROKK®

Big Impact in Demolition

Brokk is the world's leader in remote controlled demolition robots. Ideal for confined spaces and selective demolition. Brokk can help you do your job, quicker, safer & more economically.



Available for hire at Kennards Concrete Care.

24 hours - 7 days

1300 662 599

KENNARDS
Concrete Care

WESTERN WATER TREATMENT PLANT



DUE TO THE REDESIGN OF THE PLANT IT WAS DECIDED THE BAFFLE WALL WAS NOT REQUIRED AND SHOULD BE REMOVED. AUSCUT WAS SELECTED FOR THE PROJECT BECAUSE OF ITS PAST HISTORY, PRICE AND PERFORMANCE FOR THIS PARTICULAR CUSTOMER.

The project consisted of three large concrete tanks with the middle one having the baffle wall to be removed. The tanks are for settlement of sewage waste for filtrations and then recycled for irrigation of local golf coarse etc. The baffle wall to be removed was 30 metres in length 4 metres in height and 310mm thick with 16mm reinforcement steel front and back at 200mm centres, with and additional wall in the middle 11 metres long x 4 metres high x 170mm thick.

Concrete cutting was specified due to maintaining structural integrity, limited access and the requirement not to damage the existing structure.

There were several factors which had to be considered – No petrol driven equipment could be used in the tanks, and the lifting capacity of the crane and reach required for removal.

Mr Peter O’nial of Abi Simon did the calculations on the weight of the concrete and the set out prior to the core drilling and cutting of the wall.



Mr Simon Atkin of Williamstown Cranes, was contacted and he was able to supply a 300 ton mobile crane for the job which we estimated would take seven days to remove. The crane required a reach of 52 metres to lift the first section of wall cut with an approximate weight of 4.8 ton, the crane had a counter weight of 100 ton which was transported to sight on three semi trailers for assembly. The crane crew consisted of one driver and three radio controlled dog man.

The baffle and wing wall were surveyed and set out to be cut into 15 sections for removal. 30 lifting holes 75mm diameter and 9 holes on the base of all the vertical cuts were core drilled to locate any vertical reinforcement bars to avoid cutting them. Rod Booth commenced drilling the core holes on the 2nd September 2005, and Les Bartlett commenced the wall sawing on the horizontal cuts using the Dimas wall saw. The first cut was approximately 200mm up from the floor in the baffle wall approximately 30 metres in length, then a second cut 6.6 metres in length on the eastern end of the wall to reduce the size / weight of the sections being removed.

After completing the core holes Rod Booth then started the vertical cuts with the Partner K 2500 hydraulic hand saw with a Dimas HS 610 blade due to the concrete being approximately 80 MPA. The Partner K 3600 ring saw was then used to complete the cuts. All of this equipment being supplied by Cameron Mclean of Dimas, Victoria.

Prior to the first section being removed a slit 25mm wide full height was cut in the wall to avoid the first section wedging as the crane was at a reach of 52 metres. One the 7th September 2005 the first section of the wall was removed and the complete wall including the wing wall was removed. Over the next 2 days with the job completed on the 9th September 2005 with a total 92.3 ton being removed. The estimate to do the job, sawing and removal was 7 days using two cranes 300 ton and 80 ton and we were able to complete the job in three days with a total cost of crane hire including the cartage to Alex Fraser was \$ 41,000.00.

Auscut was established in August 1982 – currently it has 12 self contained vans, with a full range of core drilling, road sawing- to a maximum depth of 1 metre, wall sawing, wire sawing, and concrete grinding, one full time mechanic and four office and sales staff.



Contact: Ian Thomson
Phone No : 03 9326 5800; mobile 0419 319 325
Job Location: Western Water Treatment Plant, Queens Road Altona Victoria
Dates of Project: 2/9/05 – 9/9/05

Keeping you connected

BrazeTec is a supplier of high-quality products for all applications in the area of brazing technology. BrazeTec products guarantee long-lasting and durable brazed joints. The range of applications of our products covers areas as diverse as drive technology, plant construction, refrigeration engineering, air conditioning technology and toolmaking.

We connect people and technology.

Further information can be found on the BrazeTec website: www.BrazeTec.com

BrazeTec

A Umicore group company

Degussa Australia PTY. LTD.
30 Commercial Drive
P.O. Box 996
Dandenong, Vic. 3175
Australia
Phone: +61-3-9703 8875 • Fax: +61-3-9703 8833
Email: info@BrazeTec.de • Internet: www.BrazeTec.com

7

8

**Can be
used
dust free**

KENNARDS Concrete Care

**NEW
now for
hire**



POWER PLANER 4500

- Removes up to 1/2 inch thick concrete surface with inexpensive carbide tooling
- Exposes aggregate in concrete
- Flattens uneven concrete floors precisely
- Smooths out rough concrete surfaces
- Removes coatings, overlayments and mortars
- Removes glues and mastics
- Wet and dry diamond grinding



POWER PROFILER 2500

- Removes up to 1 inch off concrete
- Removes up to 1 inch off epoxy mortars
- Prepares concrete surfaces
- Removes ceramic tiles including underlayments in one pass
- Efficient, precise and highly productive



BEFORE



AFTER

ALSO AVAILABLE FOR HIRE

- 30 Inch Diesel Roadsaws
- Ringsaws and Chainsaws
- Hydraulic Power Packs
- Core Drills
- Dust Collectors
- Sweepers
- Crackchaser
- Schibeci Polyplaners and Profilers for Dingos
- Schibeci Profilers for Skid Steer Machines

SYDNEY BRANCH: 2/16 HERBERT ST, ARTARMON NSW 2064

MELBOURNE BRANCH: 2183 PRINCES HWY, CLAYTON VIC 3168

FAX (02) 9906 7550

www.concretecare.com.au

PHONE 1300 662 599

24 HOURS - 7 DAYS

DELIVERY AUSTRALIA WIDE

SYDNEY WATER WAS RECENTLY FACED WITH THE PROBLEM OF RE-ROUTING A MAJOR PIPELINE TO MAKE WAY FOR EXCAVATIONS ON THE LANE COVE TUNNEL. THE PIPES WERE ENCASED IN CONCRETE UP TO 1800MM DEEP AND THE CONCRETE AROUND THEM HAD TO BE REMOVED WITH LOW NOISE, VIBRATION AND ZERO IMPACT ON THE PIPES



Sydney water contracted Extreme cut pty Ltd to do the job using the Hydrostress plunge wire saw system from Castle Tools TYROLIT.

This system allowed the cuts to be placed at a 50 degree angle to make the lifting and removal easier.

Each cut was approximately 1500mm wide and 1800mm deep (see above photo)

To accommodate the plunge pulley system, first 2 x 250mm holes were drilled using the Hydrostress HCCB6-DS drill stand and Weka DK32 drill motor. Then the plunge pulleys were installed in conjunction with the Hydrostress SK-B wire saw system and powered by a Hydrostress CR-LS 25kw 3-phase power pack.

Each cut took an average of 1 1/2 hours giving a cutting rate of 1 m2 /hour when using the Tyrolit BSG3 diamond wire.

Extreme cut Have a full range of Hydrostress wall and wire saw equipment, and feel that "this will enable them to be able to undertake almost any



The Easy Way

The Powerful Way

The Creative Way

The Productive Way

The Smart Way

Your Way!



PARTNER®
CUTTING EXPERTS OF THE WORLD



DIMAS
The smart way.

Deep Drilling with the Hilti DD 200 Diamond Coring Rig

By Martin Suckling (Hilti Australia) & Ivana Pachmanova (Hilti Czech and Slovak Republic)

THE FOLLOWING CASE STUDY IS FROM THE HILTI ORGANISATION IN THE CZECH & SLOVAK REPUBLIC. THIS CASE STUDY IS A GOOD EXAMPLE OF BOTH THE PERFORMANCE OF THE DD 200 CORE RIG AND ITS FLEXIBILITY AS A SYSTEM WHICH MAKES IT SUITABLE FOR A WIDE RANGE OF APPLICATIONS.

The application was to obtain core samples for test purposes from the foundations of a bridge, 12 m below the surface. To get to the exact part of the foundation requiring assessment, the hole needed to be drilled at 1.) 30° from the horizontal and 2.) 45° from the vertical. The company doing the drilling was 'Stavební geologie – Geotechnika'. Their business focus is on coring to obtain and then test samples for the assessment of historical buildings, rail corridors, etc. Stavební's requirement was for a drill that would be able to comfortably drill to this depth (continuous drilling), but that would also be easily transportable, easy to set up, easy to operate and reliable.

The following photograph, with the Hilti DD 200 drill rig on the right hand side, shows the position of the required core hole relative to the bridge. The angle of the stand to the horizontal follows the angle of the arch of the bridge at the surface.



The Hilti DD 200 diamond drilling system has a 2.6 kW drive unit with 3 gears. The gear speeds under no load are 320 RPM (1st), 550 RPM (2nd) and 1120 RPM (3rd). The system has a drilling diameter range of between 25 and 400 mm, however, the optimal coring range is between 50 and 250 mm. The drive unit weighs 12.7 kg and is easily attached and detached from the HD30 stand. The HD30 stand has angle adjustment, but not at the expense of rigidity. The carriage on the stand has 2 feed rates, 1:1 and 1:3, to give the operator a range of control over drilling pressure. The stand weighs 17.9 kg and collapses flat for easy transportation and storage. For additional travel (as was required in this case), the stand can be extended with a 1 m rail. The drive unit and the stand thus met Stavební's need for performance, ease of transport and easy set up.

For the operator, the DD 200 drive unit has an indicator system consisting of 4 lights in a row situated on the rear of the tool. If the drilling pressure is too low, the light on the left shows up amber. If drilling pressure is optimised, both lights in the centre illuminate. If drilling pressure is excessive a red light on the right lights up. This allows the operator to back off drilling pressure before the clutch engages.

The DD 200 is fitted with a mechanical clutch, however, if the clutch engages, power to the motor is reduced to prevent the core bit jamming. The bit can then be backed away until the motor starts up again and then re-engaged. As the hole Stavební were drilling was 12 m deep, this was a feature which appealed to them. Other electronic safety features which the DD 200 drive unit has include a thermal overload sensor, tool service light and earth leakage detector. The system thus met their need for easy operation. Since its introduction into the market in 2004 (DD 200 was launched in September 2004 in Australia) the DD 200 has proven reliable and robust – which met Stavební's need for reliability.

In the event of a breakdown here in Australia, Hilti will have the tool picked up, repaired in our service centre (includes all parts and labour) and returned – all of this free of charge - during its first 2 years of life.

The final setup of the tool is shown in the following photographs. The stand was mounted at 1.) 30° from the horizontal and 2.) 45° from the vertical. A standard 1_” thread connection was used, utilising specially fabricated core bits.



For any questions related to the Hilti DD 200 diamond coring system or other Hilti products, visit our website on www.hilti.com.au or call our customer service line on 131 292.

Made in
Germany
since
1920

NEW!

in Australia

DUSS

New generation wet/dry Diamond Core drilling



■ Up to 300 mm handheld operation possible due to self-retracting centering pin and unique safety clutch



■ Unique safety clutch
■ No kick-back
■ Smooth operation
■ Retracting self-centering core bits for fast and easy operation



■ 95% water collection for operation in critical areas

DUSS

■ see more on www.duss.de/en

DUSS
tools are available from

Adelaide:

Glenfords Tool Centre
259-261 North East Road
Hampstead Gardens
Tel: 08 8266 0999
&
75 Grange Road, Welland
Tel: 08 8266 0999

Hobart:

Prime Industrial Supplies
2/39 Morningside Rd, Morningside
Tel: 03 6244 1746

Melbourne:

Crozier Diamond Tools
9 Clarice Road, Box Hill South
Tel: 03 9898 9644

Sydney:

F&K Industrial Power Tools
338 Parramatta Road, Petersham
Tel: 02 9518 3900

VEK Industrial Power Tools
3/50 Smithfield Rd, Smithfield
Tel: 02 9756 3464

■
Distributor enquiries welcome!

Please call Tooltechnic Systems
(AUST) P/L **(03) 8795 9212**
for more details

■
Designed and made in Germany
3 year warranty

No Compromises!™

**WIDE RANGE OF PROFESSIONAL
DIAMOND CUTTING AND GRINDING
TOOLS AT THE LOWEST PRICE**

WORKING HOURS AND METERS GUARANTEED*



✓ FAST CUTTING
✓ LONG LIFE
✓ EASY TO USE
✓ TOP QUALITY AT ITS LOWEST PRICE

HEAVY DUTY USE FOR:
Hard Clay Bricks,
Clay Pavers,
Granite,
Terracotta,
Reinforced Concrete

**EXCESSIVE WEAR
WILL OCCUR ON:**
Green Concrete,
Besser Block

WARNING: EYE PROTECTION REQUIRED

SAFETY

DIRECTION OF ROTATION

STEALTH®
Audiamond

• Concrete Cutting Blade
• Masonry Cutting Blade
• Hole Sawing Code Bit
• Floor Grinding & Polishing Discs/Blocks

CALL US TODAY FOR A FREE FULL COLOUR CATALOGUE

TEL: 03 9402 5084 FAX: 03 9465 5899

EMAIL: vft01@optusnet.com.au

VFT AUSTRALIA PTY.LTD.

* Term & Condition apply

Blue Circle Southern Cement, Geelong

Super City Concrete Cutting P/L

BLUE CIRCLE SOUTHERN CEMENT, GEELONG, VICTORIA IS ONE OF THE BIGGEST MANUFACTURING PLANTS OF CEMENT IN THE SOUTHERN HEMISPHERE. IT CAN PROCESS UP TO 550,000 TON OF RAW MATERIAL PER ANNUM AND IS RUN ON AN ALTERNATIVE FUEL PROGRAM BASED ON WORLD'S BEST PRACTICE.

If Blue Circle was to meet future supply & demand requests for cement products a major upgrade of the facility would be required by the end of 2005 to increase process levels to 800,000 ton per annum.

The plant was originally built in the 1960's and has had several upgrades since this time. On this particular shutdown several areas of the plant will be completely rebuilt with a number of key processing assets replaced with state of the art technology.



Super City Concrete Cutting was contacted in August 2004 to design a work program and method that was suitable for the controlled demolition of the pre heater structure. Due to confined access of the work area over several levels of the building and the design of the pre heater vessel it was decided to use diamond wire sawing to separate the structure.

The pre heater vessel is rectangle in shape and made from 16mm steel plate which is insulated with a 200mm thick refractory casing attached inside by stainless steel tie bars at 150mm centres. The strength of the refractory varied through the levels with most sections averaging 120 mpa.

We recently completed a wire sawing project at an Alcoa Smelter in Victoria where we were required to wire saw through a solid aluminium ingot 2000mm wide and 250mm in thickness. The results from that work allowed us to program production rates quite confidently based on the fact that the refractory material was made from a high percentage of alumina and silicon.

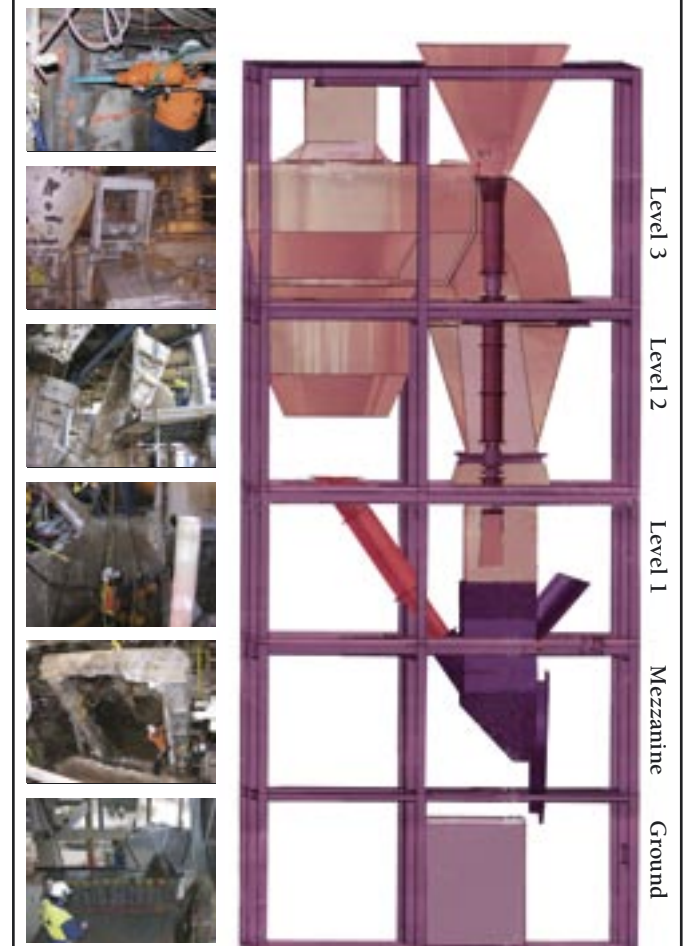
To verify our production rates we completed a test on a section of refractory material supplied to our office by the client. It was at this time we also experimented on the material with our hydraulic splitting systems to see what

effect it would have on the material. The splitters were very effective in separating the material to such an extent we modified our original work program and method to include the use of the hydraulic splitting systems.

On the 28 February 2005 Super City was awarded the contract to demolish and remove the pre heater vessel. We commenced the contract on the 11 April 2005 supplying day & night twelve hour shifts, with 7 operators per shift. Each shift supervisor co-ordinated the days activities based on the contract work program.

The scope of the pre heater removal was incorporated over 5 levels of the pre heater building, these being Levels 3, 2, 1, mezzanine, and ground. The pre heater vessel was attached at ground level to the inlet chamber of the kiln connecting up through level 3 to a cyclone vessel of the plant. Attached to the pre heater vessel throughout these floor levels were a number of redundant chutes, pipes and access landings all of which had to be removed.

Blue Circle Cement Plant



The removal process was to start at the top of the pre heater on level 3 and finish at ground level to the building. Each section was to be removed back up through the level 3 opening and transported by an internal gantry crane onto a fabricated landing attached to the perimeter of the building on level 3. Assisting in the removal process, boilermakers cut through the 16mm steel plate of the pre heater as set out by Super City supervisors. Sections sizes were limited by weight and existing access through each floor level.

Operator's core drilled two hundred and fifty holes through the pre heater vessel for the use of our hydraulic splitting systems. 80% of these holes were completed using a rig & base or gyro stand unit. The remaining 20% were completed by hand due to access and entry restrictions facing the vessel. The 48mm holes were positioned in a pattern relevant to the size of the section we wished to remove. The average time to drill one hole with a stand was about 10-15 minutes. Holes drilled by hand averaged 40 minutes with some taking up to 80 minutes due to the 120mpa strength of the refractory.



On completion of the core drilling our operators set up the wire saw on top of the pre heater on level 3. The method involved wire sawing two cuts through the vessel creating a 4 ton section in the shape of a wedge. The set up time for each cut was 120 minutes with actual sawing time taking 25min each. With the 1st section removed we were able to utilise the splitting systems for the remainder of the removal. When using any splitting system the ideal situation is to always have a free face to push into too. By wire sawing we were able to create the required space saving us considerable time compared to other methods.

The pre heater vessel had two stainless steel expansion joints attached to the vessel on level 2 and level 1. The original method to cut each joint into quarters was no longer permitted due to unknown quantities of asbestos and other materials found inside of the joints. This created some concern as to how we could remove the section in one piece without breaking into the joint. As there were no other alternatives we decided to remove the expansion joint in one piece. Each joint weighed 8.2 ton and had a nominal clearance of 35mm to clear the existing floor opening on level 3. Due to limited access once again the section joints had to be rigged off centre which made the removal process extremely awkward.

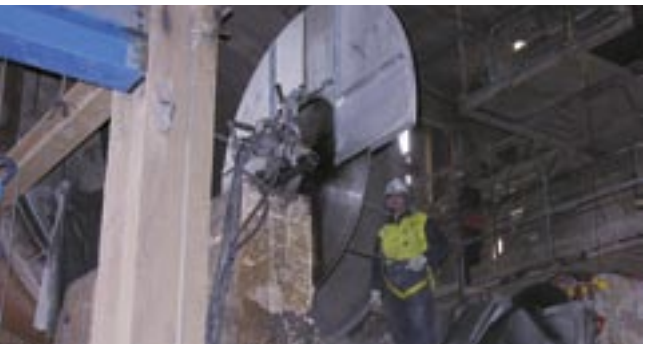
Once we had passed these obstacles the removal process continued quite fluently. Both day shift and night shift were on schedule with a great deal of time being saved with the introduction of the splitting systems. When we reached the inlet chamber of the kiln on ground level we had removed 35 sections of the pre heater vessel. The average weight of each section was 4 ton with the heaviest being 8.2. We removed a total of 160 ton in fourteen, twelve hour shifts.

As a variation to our contract we were instructed to remove a horizontal section of concrete from the top of pit 4 which supported the kiln and new pre heater vessel. We had estimated that this would be completed in one shift but were proved wrong. When we attempted to place our wall saw anchors into the walls we found that the existing reinforcing in the concrete had severe damage from exposure to water over the years.

The site engineers instructed our crews to remove the perimeter reinforcing along the internal face of the pit walls. We set up our wall saw and made two vertical cuts 700mm deep along the face of each wall. Our operator's then jack hammered away the concrete to expose the damaged reinforcing so repairs could be made.

This type of demolition was quite an experience and very educational for all. Everyone involved learnt a great deal from the exercise. We have a better understanding of what our specialised systems can achieve when put to the test. Super City spent a great deal of time working on systems and testing materials which reassured the client of our commitment and capabilities. Shut down work is always difficult because of program deadlines and other trades working in close proximity. The equipment and method we applied enabled other works around us to continue which I feel helped us secure the contract. Conventional demolition was not an option due to restricted floor loading capacities of the building.

Super City Concrete Cutting operates throughout Australia with branches in Victoria, New South Wales, and the Northern Territory. We supply a wide range of specialised



systems with the personnel, equipment, and stock on hand to mobilise at short notice to all destinations. Our work force is multi skilled and prides itself on a professional reputation they have created for the company over the years. We place a big part of our success on having a trained and responsible work force that is safety conscience and eager to learn new ways.

EQUIPMENT USED

Wire Saws

- Hydrostress SK-SD
- Hydrostress SB

Wall Saws

- Hydrostress FZ 4S Power Packs
- Hydrostress AD S4
- Hydrostress RD S4
- Melville 15kw twin
- Meco 20hp
- Darda 15kw

Splitting System

- Darda C12 cylinders
- Darda C9 cylinders
- Darda HCB6 combi shears

Core Drills

- Hydrostress DK 32
- Hydrostress DK 12
- Dimas GYRO 50
- Dimas GYRO 40
- Hilti DD200

Diamond Consumables

- Tyrolit BSG3 electroplated wire
- Tyrolit granite segments
- Tyrolit WS30X wall saw blades

For additional photographs of work carried out at Blue Circle visit our web site www.supercity.com.au



USED MACHINERY FOR SALE - CONCURT JOINTMASTERS

This equipment has been developed over many years to provide automated, efficient, cost effective and accurate cutting of contraction joints during the construction of concrete roadways. It is available for sale due to the restructure of the Concurt Holdings Group of Companies.

For further information please contact:

Dave Rees at Concurt Holdings Pty Limited.

Tele : (02) 48 402 443

Mob : 0408 223 174 Fax : (02) 48 402 361

Dave.rees@concurt.com.au

Pearson Concrete Cutting Based in Brisbane



IN APRIL 2005 PEARSON CONCRETE CUTTING BASED IN BRISBANE QLD WAS ASKED TO PERFORM AN INVERTED WALL SAW JOB IN THE HEART OF BRISBANE’S BUSY CBD. THE MAIN PROJECT WAS REFURBISHMENT OF AN EXISTING MULTISTOREY BUILDING INCORPORATING NEW PLANT ROOM AND UPDATED OFFICE SPACE.

The job involved the Drilling of 14 X 100mm dia core holes x 190mm deep Concrete (lifting holes) and to Wall Saw (Inverted) 21m x 350mm deep Concrete. The purpose was to assist in the removal of a 21m parapet on existing building to enable expansion of plant room.

The parapet attached to the existing building was 400mm thick and from the topside sloping down to 150mm on a slight concave and the underside being flat and perfect for mounting inverted. Due to its irregular shape it had to be removed carefully without affecting the structural integrity of the building. Inverted wall sawing was the optimum method devised as jack hammering or any other form of percussive demolition could be harmful to the loading of the building and upset tenants on other floors as well as the general public below.

A very important part of any cut & removal is the support scaffold. Erected by the principal contractor it was monitored regularly for any movement during the cutting and drilling process. The lifting holes were drilled (14 x 100mm dia x 190mm deep) prior to wall sawing to ensure continuity of works. The Wall saw was mounted on underside of parapet and although the material was an exposed aggregate it cut well and works were completed that day.



Being in the heart of the CBD all work was out of normal working hours. You can meet some interesting people at 4am in the city! We had to be mindful of noise & water pollution as we would do normally but as we were in the public eye extra special consideration applied.

Pearson Concrete & Asphalt Sawing & Drilling based in Brisbane Queensland have been in operation for 25 years and focus mainly on floor sawing, wall sawing, core drilling, surface preparation and controlled demolition.
Telephone: 07 3359 5988
Fax: 07 3350 3985
Email: pearsoncasd@bigpond.com.au
www.pearsonconsawdrill.com.au

Intercontinental Hotel Sydney

DURING 2004, BOVIS LEND LEASE EMPLOYED THE SERVICES OF RIPA CONCRETE CUTTING TO MANAGE AND COMPLETE A COMPLICATED AND INVOLVED PROJECT LOCATED ON THE ROOF-TOP OF THE INTERCONTINENTAL HOTEL IN SYDNEY. GIVEN THE ENORMITY OF THE TASKS AND THE POTENTIAL HAZARDS INVOLVED, IT WAS OBVIOUS TO BOVIS LEND LEASE THAT RIPA CONCRETE CUTTING WAS THE RIGHT COMPANY, GIVEN THEIR EXPERTISE, PROFESSIONALISM AND RELIABILITY IN CARRYING OUT SUCH A MISSION.



The project Ripa Concrete Cutting were seconded to manage involved assistance in securing a temporary tower crane on the roof-top of the building to enable the removal of demolition works Ripa Concrete Cutting carried out. Securing the tower crane involved significant amounts of drilling to anchor the crane to the existing beams and columns of the building, 33 floors above the city streets.

Demolition works Ripa performed consisted of pre-cast walls of the roof plant room, including awkward parapet walls, new access penetrations and massive amounts of associated concrete cutting works.

Ripa’s highly trained experts managed all tasks efficiently, effectively and safely in disastrous weather conditions, implemented fail proof slurry control measures, which is paramount to any project Ripa carry out and controlled the safe removal via crane of each section from the roof-top to street level.

The success of the project carried out by Ripa Concrete Cutting surpassed the expectations of Bovis Lend Lease. No disruptions were encountered by the guests and staff of the hotel, all areas of the project were managed with 100% professionalism, expertise and safety. Ripa’s efficiencies made possible the continuation of the project commenced ahead of time.



The demolition works carried out by Ripa Concrete Cutting’s team of experts was instrumental in laying the foundation for what now exists...a World Class Roof-Top Restaurant with one of the best views of Sydney’s greatest assets..... It’s Harbour!

PARTNER

K750

A NEW POWER CUTTER GENERATION IS BORN
Powerful, robust & simple

Hand held cutting from Partner has never been more efficient or easy. Partner's R&D team has designed a compact power cutter, full of technical features and innovations.

The K750 is equipped with a revolutionary new motor technology... DualCharge.

DualCharge technology is an environmentally friendly innovation that reduces emissions by as much as 70%. The K750 is not only more user friendly, but it is also extremely powerful, providing considerably better power and higher torque, whilst being incredibly economical on fuel at the same time. Other features include:

- The newly developed vibration dampening system results in considerably lower vibrations and more comfortable operation.
- The Poly V drive belt ensures better transmission, needs less tensioning and has an increased service life.
- The decompression valve enables a Simple Start
- 25% lower sound level thanks to a larger muffler.
- New, clearly visible fuel indicator in the tank shows the fuel level to avoid unnecessary stoppages.
- Integrated wet cutting kit with easily adjustable and more exact water flow.
- SmartCarb, built in automatic filter compensation, maintains high power and lowers fuel consumption.



DIMAS

AS 54B SERIES

DIAMOND DRY CORE BITS

High speed & hassal free dry drilling.

Offering Specially designed corrugated segments laser welded to a purpose made dry barrel the new AS54B series offer high speed hassal free dry drilling.

Available in sizes 47 mm to 162 mm.

- Large connector (1 1/4") fitting a vacuum adapter.
- Useable length: 320 mm.
- The segments are laser welded on the steel tube for safety in dry applications.
- The number of segments and their corrugated shape are optimised for high speed in a dry usage.
- Slots between the segments optimise the dust suction and also prevent overheating.

Two advantages:

- Less dust out of the vacuum cleaner
- Less power lost in friction



The slots help to catch the dust.

AS54B Dry drilling range with vacuum

Bianco Diamond Blades

Bianco Core Bits

Lissmac Cutting Saws

Adamas Drilling Equipment

Excalibre Hydraulic Drill Motors

Meco Floor Saws

Darda Splitters & Crushers



DIAMOND TOOLS AUST. PTY. LTD.

TOLL FREE: 1300 366 662

Exclusive Australian Distributors for



1 Pattinson Road
Newton SA 5074



Onsite Mobile Service
Bentleigh VIC 0000



Unit 1/21 Delage Street
Joondalup WA 6027



Unit 3/30 Morley Street
Coorparoo QLD 4151



Unit C1 27-29 Fariola Ave
Silverwater NSW 2128



Cutting Solutions

By Condrill Services, Queensland

USING THE VERY LATEST DIMAS WIRESAW CS2512, CONDRILL SERVICES, QUEENSLAND, RESOLVED A RATHER DIFFICULT DILEMMA DURING A QLD WATER TREATMENT PLANT UPGRADE.

Contractors working on the upgrade were faced with a particularly difficult problem of having to remove a 1.6m diameter, steel encased concrete pipe, that carried effluent water. This recycled effluent water also needed to be diverted away from the dam, so a rectangular concrete tank was built around the pipe, to enable the diversion for further recycling before entering the dam. In order to create this diversion, the 1.6m diameter pipe had to be removed from the tank and a gate put in.

Condrill Services were consulted for this job, due to their ability to provide innovative solutions.

Condrill Services decided that a wire saw would be the most appropriate solution for this difficult situation. They then contacted Stuart Smith of Husqvarna Construction Products and purchased a new Dimas CS2512 Wire Saw. The wire saw was despatched and delivered overnight with C 1200m specialised steel cutting wire.

The pipe to be cut was covered with a 2mm Sinter rubber coat, 20mm of steel, followed by 30mm of concrete. To make the job even more difficult the pipe was live, with effluent water going through it at the rate of 200,000 Litres per minute. Once the cut went through the bottom of the pipe, the tank started to fill with water. Steps had to be put into place for any wire breakage and be able to feed the wire around the pipe for the second cut, as the pipe would, by then be under water.

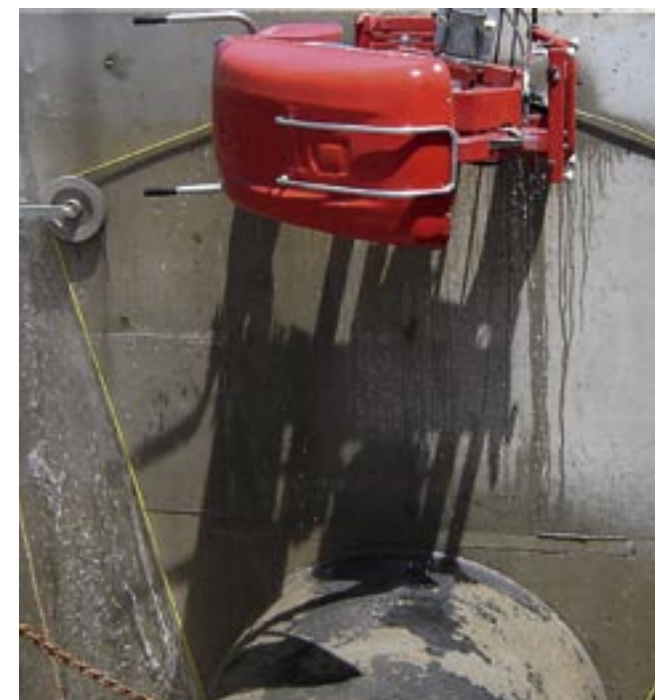
The work was done without a hitch, on time and on budget.



Condrill Services operate throughout Queensland and northern New South Wales.

Contact Greg Mahoney on 07 5532 3546, or by email at sales@condrill.com.au.

Web Site condrill.com.au

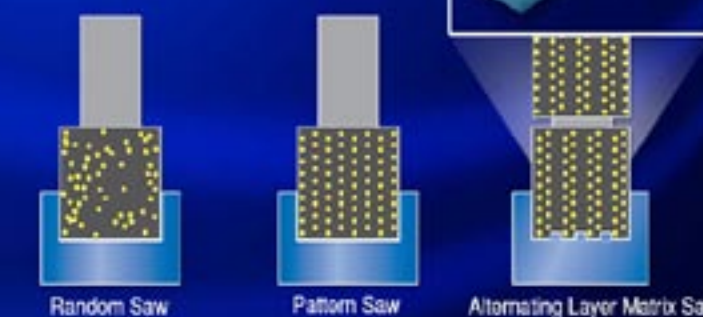


Castle Tools TYROLIT introduces
the latest in diamond blade technology

ZENESIS™



Alternating layer -
How it works



Years of design and testing
have gone into creating an
all new system for superior
concrete cutting.

Using a specially developed
alternating layer design,
Zenesis™ blades are the
way of the future.

**Call 1 300 881 600
for more information**

WISCONSIN HEAVY- DUTY ENGINE

and LONG BLOCKS available.

Rugged * Reliable

Spare parts readily available

Contact : Shaun

Sales & service: contact Stan

Pivot Power Products Pty Ltd.

Unit 10/24 Anzac Avenue,

Smeaton Grange. N.S.W 2567

Ph: 02 4647 6944

Fax: 02 4647 79105



CUTTING-EDGE INSURANCE

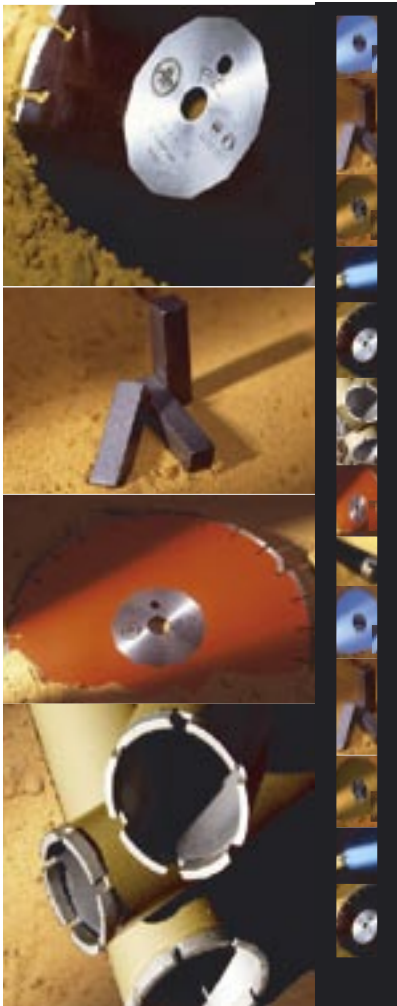
OAMPS Insurance Brokers specialise in producing unique insurance solutions for demanding industries. We've provided leading insurance cover for a variety of industries including the Civil Contractors Federation and the Petroleum Distributors Association.

In conjunction with the CCIA, OAMPS has developed a leading insurance policy that covers the unique needs of your industry at competitive prices. This policy is only available to CCIA members. For more information, contact OAMPS now on:

(03) 9412 1609

OAMPS
Australian bred success

ABN 34 005 543 920



SDS Corporation

SDS's primary business is focused on the design, manufacture and distribution of a wide range of consumables, technology, services and solutions to the mining / construction / exploration / tunnelling / mineral processing and drilling industries through its extensive distribution network – the largest of its kind in Australia, with expanding networks in international markets.

The company employs more than 400 people within its 21 branches across Australia, Canada, Africa and Indonesia.

SDS Diamond & Boart, a subsidiary of SDS Corporation Limited, is a recognised and respected manufacturer of diamond impregnated core bits, saw blades and thin wall bits. It is a name synonymous with quality, consistency and reliability.

The **Diamond & Boart** name has been at the forefront of the mining and construction industries in Australia for over five decades. D&B has been associated with many of the pioneering developments in our industries including the concrete saw, the thin wall bit and the development of impregnated bits for mining.

Proudly Australian made and Australian owned.

SDS Diamond & Boart Pty Limited ABN 86 000 062 840
1 Carolyn Street Silverwater NSW 2144 Tel: +61 2 9648 5744 Fax: +61 2 9648 5198

CCIA Members

A Grade Concrete Cutting & Drilling

A Quick Core Pty Ltd
A1 Concrete Services Pty Ltd
AAA Cutcrete Services
ABC Superabrasives
Able Concrete Sawing
ACCU-Cut
Ace Concrete Sawing Pty Ltd
Advance Drilling & Sawing
Advanced Concrete Cutting
Advanced Sawing & Drilling Pty Ltd

Ali-Cut Concrete Cutting
All City Sawing & Drilling
Allsite Concrete Cutting Pty Ltd
Arrow Concrete Sawing
Asahi Diamond Industrial Australia Pty Ltd
Auscut
Auscut Gippsland Concrete Sawing
Ausquip Supplies
Australian Industrial Abrasives Pty Ltd

B & C Concrete Sawing & Drilling

Bay Hire Precision Drilling
Bellara Concrete Cutting P/L
Berry Wallsawing
Bianco Diamond Tools
Blazes Sawing and Drilling
Breakaway Concrete Cutting & Drilling (SA) Pty Ltd

Break-A-Way Concrete Cutting Services Pty Ltd

Breakthrough NQ
Bylsma Hire
C & N Concrete Sawing and Drilling

Castle Tools Tyrolit Pty Ltd
Centre State Concrete Sawing & Backhoe Services

Churchills Diamond Products
Combined Concrete Cutting Pty Ltd

Complete Cut
Concrete Cutting & Sealing (Holdings)

Concrete Sawing & Drilling Association

Concut (NSW) Pty Ltd
Concut (Vic) Pty Ltd
Concut Holdings Pty Ltd

Concut Pty Ltd
Concut Pty Ltd Brisbane
Concut Pty Ltd Perth
Condrill ACT
Condrill Services Pty Ltd
Conquest Cutting & Drilling
Coral Coast Hire
Core Crete Concrete Cutting
Cortek - Concrete Coring & Sawing

CQ Drilling & Sawing (Rockhampton)

Crozier Diamond Tools
Cut and Core
Cut and Core QLD t/as Briscut
Cut Loose Concrete Cutting & Demolition
Cutrite Concrete Cutting and Core Drilling
Cutting Concrete
Cutwell Concrete Sawing & Drilling

Dean's Concrete Service
Degussa Australia Pty Ltd
Delta Diamond Tools Pty Ltd
Diacore
Diacut
Dial-A-Digger
Diamond Cut Concrete
Diamond Cutting Solutions
Diamond Die Services

Dimas
Dolphin Recycling Pty Ltd
Downs Concrete Cutters T/AS
Burke Industries P/L
Husqvarna Construction Products Australia
Exact Core Drilling & Concrete Sawing
Ezy-Cut Concrete Sawing & Drilling Pty Ltd

Fast Cut QLD Pty Ltd
Fraser Coast Concrete Sawing
Freo Concrete Sawing & Drilling
G & G Concrete Cutting Services Pty Ltd

G M Concrete Sawing Service
Gemcut
Global Concrete Cutting Services
Grafton Hire
H & S Concrete Cutting
Hardcore Concrete Coring
Hilti Australia
Industrial Diamond Association of America Inc

James Lamb Concrete Cutting & Drilling

Kennards Concrete Care
Kwik-Cut Concrete Drilling & Sawing

L & T Diamond Drilling
LM & LM Knight
Mastercut Concrete
Matrix Diamond Tools
Melbourne Sawing & Drilling Pty Ltd

Metro Diamond Products Pty Ltd
MI-CUT Australia Pty Ltd
MK Diamond Australia
National Contracting Pty Ltd
NQ Concrete Sawing & Drilling
OAMPS Insurance Brokers
Oz Cut
Pat Kelly & Sons Concrete Cutting

Port Macquarie Core & Saw
Power Concrete Cutting
Precision Concrete Cutting Pty Ltd

Procut Concrete Cutting and Drilling Pty Ltd

QLD Concrete Drilling and Sawing

Quick Cut Concrete Cutting
Razor Concrete Cutting QLD Pty Ltd

Razor Cut Concrete Cutting & Drilling Pty Ltd

Ripa Concrete Cutting Pty Ltd
Rock Equipment
Roosta Concreting
Saint-Gobain Abrasives
Saw-Crete Pty Ltd
Schouten Concrete Construction
SDS Diamond & Boart
SDS Diamond & Boart Pty Ltd
Sledgehammer Concrete Cutting Services

Smith & Osborne - Brisbane
Smith & Osborne - Melbourne
Smith & Osborne - Sydney
Soff-Cut Saws and Blades
South West Concrete Cutting & Drilling

SP Diamond Technology
Stewart Concrete Cut & Core
Stocks & Hogan Core & Saw
Sunshine Coast Concrete & Asphalt Sawing

Super City Concrete Cutting
Supercore
Supercut (WA) Pty Ltd
Supercut Concrete Cutting
Supercut Concrete Services Pty Ltd

Sure Cut Concrete Cutting
Syntec Diamond Tools Pty Ltd
Taffy Griffiths Concrete Cutting Pty Ltd

Taman Tools (Castle Tools Tyrolit)
Tascut
Terpstra Enterprises
The Construction Store Pty Ltd
The Coring and Cutting Group
The Drilling & Sawing Association Limited

Tom Pearson Concrete & Asphalt Sawing & Drilling

Transcut
Triple C Buliders Services
Trojan Concrete Cutting
Tru-Cut Concrete Cutting & Drilling

Twin Cities Sawing
Undercut
VFT Australia
Westcut Concrete Sawing and Drilling

Younicut 'n' Core

CCIA Executive Committee

Condrill Services Pty Ltd

Mr Greg Mahoney

PRESIDENT

Tel: (07) 5532 3546

Email:

sales@condrill.com.au

Cut & Core

Mr Neil Horne

VICE RESIDENT

Tel: (03) 9421 4466

Auscut

Mr Ian Thomson

Tel: (03) 9326 5800

Concut Pty Ltd

Mr Peter Callaway

Tel: (08) 9330 5999

Concut Pty Ltd

Mr Jim Glen

Tel: (02) 9677 1555

Concut Pty Ltd

Mr Dave Rees

Mob: 0408 223 174

Email: ho@concut.com.au

Concut Pty Ltd QLD

Mr Gary Milton

Mob: (07) 3808 4322

Email: qld@concut.com.au

MI-CUT Australia Pty Ltd

Mr Paddy Griffin

Tel: (03) 9543 8700

Diamond Cut Concrete

Mr Jon Hart

Tel: (08) 9317 1872

Email:

diamondcut@iinet.net.au

Diacore

Mr Scott Hanley

Tel: (02) 9905 8188

Email: scott@diacore.com.au

Dimas Australia

Mr Stuart Smith

Mob: 0413 435 876

Email:

stuart.smith@dimas.net.a

Dimas Australia

Mr Darren Williams

Mob: 0413 435 882

Email:

darren.williams@dimas.net.au

Dimas Australia

Mr Jason Jamieson

Mob: 0413 434 883

Email:

jason.jamieson@dimas.net.au

QLD Concrete Drilling & Sawing

Mr Robert East

Tel: (07) 3274 3803

SDS Diamond & Boart

Mr Lloyd Thomas

Tel: (02) 9648 5744

Tom Pearson Concrete Asphalt

Sawing & Drilling

Mr Tony Pearson

Tel: (07) 3359 5988

Ripa Concrete Services Pty Ltd

Mr Kevin Smith

Tel: (02) 9673 3211

Email:

ripaconcrete@bigpond.com.au

FOR SALE USED EQUIPMENT

CEDIMA WS-1204E

Includes power pack, remote control, tracks and mounting brackets, blade guards up to 1800mm. Maximum cutting depth 810mm. Flush cutting guard and flange. Seven years old.

CEDIMA WS400 (2 available)

Includes power pack, remote control, tracks and mounting brackets, blade guards to one metre. Maximum cutting depth 530mm. Flush cutting guard and flange. Four years old.

For further details call:

Lindsay Ryan 0418 465 236

DIMAS
The smart way.

