

# DIAMONDS

OFFICIAL PUBLICATION FOR THE CONCRETE SAWING AND DRILLING ASSOCIATION OF AUSTRALIA

ISSUE 12 SEP 2015

## MASS DE - CONSTRUCTION ROSS RIVER BRIDGE DEMOLITION

## TOOWOOMBA TAKES OFF

## THIESS TUNNEL LINK





**DISCOVER THE DIFFERENCE**  
**ALL TRAXX EQUIPMENT IS SUPPORTED 24/7/365**

**Melbourne, Sydney, Brisbane, Perth, Adelaide, Darwin, Hobart**  
**PASSION. INNOVATION. EXCELLENCE.**

TRAXX CONSTRUCTION PRODUCTS.  
Head Office Unit 4/1 Rocklea Drive, Port Melbourne Victoria Australia, 3207  
Phone 1300 109 108 | T: +61 (0) 3 9646 9200 | E: info@traxxcp.com.au

**WWW.TRAXXCP.COM.AU**



**CONCRETE SAWING & DRILLING  
ASSOCIATION OF AUSTRALIA (CSDAA)**

C/- Australian Industry Group  
Level 2, 441 St Kilda Road, Melbourne 3004  
PO Box 7622, Melbourne VIC 3004  
AUSTRALIA

E: associations@aigroup.com.au  
W: www.csdaa.com.au

**CSDAA BOARD**

**PRESIDENT: JASON FRANKEN**  
SUPERCITY CONCRETE CUTTING  
E: supercity@bigpond.com

**VICE PRESIDENT: SCOTT HANLEY**  
DIACORE  
scott@diacore.com.au

**CSDAA SECRETARIAT: CAROLYN MACGILL**  
AUSTRALIAN INDUSTRY GROUP  
carolyn.macgill@aigroup.com.au

**CSDAA EXECUTIVE**

**MARIO GOMIZELJ**  
ADVANCED SAWING & DRILLING  
info@advancedsawing.com.au

**WILL VISSER**  
BROKK AUSTRALIA  
will@brokkaustralia.com.au

**KEVIN SMITH**  
RIPA CONCRETE CUTTING  
kevin@ripagroup.com.au

**LLOYD WILLIAMS**  
TRAXX CONSTRUCTION PRODUCTS  
lloyd.williams@traxxcp.com.au

**PHIL ROWDEN**  
TYROLIT  
phil.rowden@tyrolit.com

**WARU WHITEMAN**  
NOVA-CUT CONCRETE SAWING  
novacut@bigpond.com

**JODI BAKER**  
HUSQVARNA CONSTRUCTION PRODUCTS  
jodi.baker@husqvarnagroup.com

**CATHERINE THOMSON**  
QLD CONCRETE DRILLING AND SAWING  
catherine@qcds.com.au

**TOM BRITCHFORD**  
CONCUT (VIC)  
tom@concutvic.com.au

**EDITORIAL REVIEW**  
info@csdaa.com.au

**ISSUE**  
**12**

**FEATURES**

**04**

**THIESS TUNNEL LINK**



**08**

**CUTTING FORCE - GLEN HUNTLY  
RESERVOIR REDEVELOPMENT**



**17**

**ROSS RIVER BRIDGE DEMOLITION**



**34**

**TOOWOOMBA TAKES OFF**



**REGULARS**

**02** PRESIDENT'S REPORT

**38** INDUSTRY BITS

**40** INDUSTRY CALENDAR

**40** ADVERTISERS LISTING

**42** MEMBERSHIP FORM

**45** MEMBERS LISTING

COVER IMAGE  
Mass De-construction  
by Neil Horne  
Ross River Bridge Demolition  
www.cutandcore.com.au

**DIAMONDS**

OFFICIAL PUBLICATION FOR THE CONCRETE SAWING AND DRILLING ASSOCIATION OF AUSTRALIA





## PRESIDENT'S REPORT 01/07/2015

The second half of the year is well under way and it is interesting to see how the different States and Territories are faring with sawing and drilling projects.

It is still disconcerting to see that construction companies seem to hold all the cards when negotiating contracts for sawing and drilling packages. The term "bottomed out" is an appropriate acronym as it reflects the current state of the sawing and drilling sector in Australia.

Ironically the last quarter saw an increase in employment advertisements for sawing and drilling operators nationally. Whilst this may sound encouraging, I took the liberty of calling a Sydney based company and discussing why so many businesses in NSW are advertising for operators.

It came as no surprise to hear that trying to find an operator with the right skills, aptitude and work ethic is a challenging task. More often than not applicants for these positions over state their competencies or have limited experience in the sawing and drilling sector.

This news may not come as a surprise to many and even more may say who cares? Well I can tell you, as a business owner, it reflects poorly on our industry. It also reinforces the training deficiencies and lack of skills in the market when trying to employ a concrete sawing and drilling professional.

If we, as an industry, do not adopt a training regime that provides higher standards of learning and develop skills based techniques, we will never differentiate ourselves from the current status quo. Implementing a standard for training is the foundation to success for every individual and company. Now is the time for all members to start being supportive and proactive.

This past week has also seen the resignation from the Executive of an industry stalwart - Ray Thomson. For those who are unaware, Ray has been battling a medical condition for a number of years and it has forced him to make this hard decision.

On behalf of the CSDAA Executive and Members we thank Ray for all of his contributions and selfless approach to industry needs.

In another sad report, the previous Vice President of the CSDAA, Peter King suffered, a stroke on Saturday 11th of July, 2015. Gai King has advised Peter is recovering in hospital and is expected to make a slow recovery. Peter has had a few rough experiences over the past two years and is staunch in his beliefs and outlook on life. I am sure Peter will make a full recovery and on behalf of the CSDAA Executive and its members, we wish Peter good luck and a speedy recuperation.

The CSDAA 2015 Tech Fare is being planned and scheduled by the subcommittee headed by Jodi Baker. The location this year is the South Wharf Precinct in Melbourne. Dates have been finalised and the event is scheduled for 15th -17th October 2015. A prospectus has been sent out to suppliers for registrations and sponsorship packages.

As always, if any member or non-member wishes to discuss issues regarding the Association or industry related business, please don't hesitate to contact me. I am happy to provide assistance where I can.

Jason Franken,

**CSDAA President**



## SuperCity CONCRETE CUTTING

SERVICING AUSTRALIA

### SERVICES

- Concrete and Asphalt Sawing and Coring
- Diamond Wire Sawing
- Expansion Sawing
- Wall Sawing
- Hydraulic Sawing
- Confined Space Operations
- Brokk demolition robot with crushing Systems
- Suspended Slab, Footings, Bank Vaults and Concrete Super Structures
- Bob Cat and Crane Trucks

### BACKGROUND

- Professional Operators
- Confined Space Entry Accredited
- OH&S and First Aid Accredited
- 24 Hours Service
- Member CSDAA
- E.B.A. Certified C.F.M.E.U.

**Free Call: 1800 SAW CUT**



P 0418 520 311 | F (03) 5248 8010 |

E [supercity@bigpond.com](mailto:supercity@bigpond.com) | W [www.supercity.com.au](http://www.supercity.com.au) |



**WALL SAW  
WSE811★★★**  
Cutting depth up to 315mm  
The lightest & most compact Wall Saw in the WORLD!

**1 cable, 1 hose & only  
weighing 25kg with 9kW  
of pure power!**

**ORDER NOW**

FOR MORE INFORMATION:  
[info.au@tyrolit.com](mailto:info.au@tyrolit.com)  
1300 TYROLIT (897 654)  
or  
Contact your local Tyrolit Representative

**TYROLIT**



# THIESS PEDESTRIAN TUNNEL LINK

Thiess is delivering one of Australia's most technically complex tunnels to create a vital underground pedestrian link in the heart of Sydney's CBD.

Measuring approximately 180 meters, Wynyard Walk sets a national benchmark for cutting-edge tunnel design and construction in one of the nation's busiest urban precincts.



**ABOVE** - Removal of first piece of 600mm diameter core

The walkway will allow pedestrians to get from Wynyard transport hub to the Barangaroo waterfront in approximately six minutes, avoiding steep inclines and road crossings.

Cutting Force were awarded the contract to complete core drilling for the canopy tube systems. This was successfully completed in two stages, with Cutting Force implementing two 12 hour shifts to complete the work within the scheduled program.

Stage one involved core drilling 43 holes in strategically located positions at 240mm diameter x 450mm deep with a tolerance of +/-5mm.



Stage two involved a custom designed and built drilling rig that could house and drive the 600mm diameter x 2200mm core bit, which was capable of drilling 5.5 metres through bored pile and into the rock face. Cutting Force selected TYROLIT to supply their quality TGD 600mm core bits and TYROLIT DGB 1000 drilling gear box powered by WSE 1217 High Frequency that is capable of driving up to 1000mm core bits to complete these works. The DGB 1000 has eight stages for optimal speed and was powered by TYROLIT High – Frequency Electric Motors, the same units that Cutting Force operates on their TYROLIT Wall Saws and Wire saws. Thiess' engineering and Cutting Force, through planning and critical analysis of the work undertaken allowed this stage to be completed within four days, well under the scheduled six day work program.

Cutting Force is extremely proud to deliver a quality service and provide support to Thiess. Cutting Force looks forward to continuing involvement in the projects Thiess undertake Australia-wide.

**BELOW** - Start of 3rd 5.5 meter deep hole with custom made drilling



**BELOW** - Cutting Force operator Darren drilling final hole



## GELMAXX®

*Slurry Solutions & Excess Water Management*

**AQUAMAXX** - SEPARATES WATER FROM SLURRY SOLIDS TO RECYCLE THE WATER & REDUCE WASTE

**ECO-QUICKGEL** - TURN SLURRY WATER INTO A SAFE, DISPOSABLE SOLID IN ANY STANDARD TRASH CAN

**TIP:**  
ECO-QUICKgel can create water barriers that keep water from spreading

Call: +61 409 427 101 | [GELMAXX.COM.AU](http://GELMAXX.COM.AU)





# SMITH & OSBORNE – LIVE DATACAST



Site – Wharf Rd Longueville NSW

Client – Live Datacast

Contact – Mr Tim Ryan

When we first made contact with our new client to discuss his options on flooring before anything was said, Tim asked “do you wanna cuppa mate?”

Set up in his cluttered garage was his pride and joy cappuccino machine. We knew straight away that Tim was going to be a great client.

When Tim asked what we required to produce a good floor, I said you need a very good concreter and a flat slab with no foot prints. “That’s great because my concreter has recommended yourselves” Tim said.

After discussing the types of finishes he could have, Tim decided on a “salt and pepper” look.

Well as you can see by the photos they ended up with a heavily exposed aggregate floor. After about 6 passes using a HTC 850, the floor was showing big aggregate in some areas and none elsewhere.

A typical concreter unable to produce a flat level slab, but at least there were no foot prints.

Tim’s home consists of three levels, with the upstairs being open plan and a view that’s fantastic. I would have to say the balcony is my favourite spot boasting pizza oven BBQ and wine fridge at one end and at the other a large TV, not to mention the view. Did I mention that?

Nowadays, Tim sits on the balcony with a glass of red and enjoys his little piece of Oz.



TUNNELING

CEMENT

PROCESS

NUCLEAR

CONSTRUCTION

MINING

## Unbeatable performance

**Nobody beats Brokk** when it comes to demolition at reconstructions or renovations of residential, commercial or industrial facilities. This remote-controlled, electric powerhouse combines impressive hitting power with an outstanding reach, while the operator works at a safe distance from vibrations and falling debris.

Brokk is so light that it can work even on weak floors. So clever that it can take the stairs (or the elevator) between floors. So effective that you see the difference on the bottom line. In each project.

**BROKK**

Original Demolition Power™



# CUTTING FORCE - GLEN HUNTLY RESERVOIR REDEVELOPMENT

Cutting Force was engaged by Entracon as part of the City of Glen Eira open space strategy. This strategy is designed to bring a new open space to Glen Huntly by removing the old reservoir site and implementing a new park which will include a water play area, landscaped interactive playground, urban forest corridor, open grassed area and picnic facilities.

The tender for the works included:

- 3000 lineal metres of 150mm deep road sawing to the floor of the dam
- 2 off vertical wire saw cuts to the sluice gate
- 4 off 75 degree wire saw cuts to perimeter walls
- 2 off 75 degree wire saw cuts to internal wall
- 1 off vertical cut to internal wall

**BELOW** - Old reservoir site - City of Glen Eira - Glen Huntly



**BELOW** - Open Space strategy planning development



Due to the close proximity of residential houses, the council had placed noise restrictions on the demolition work. This meant that Entracon could not use power tools or loud hammers on the excavator.

The beginning of the job saw Entracon use breakers on the walls but after two days the team was struggling and had achieved no real progress. To save time, Cutting Force proposed using the BTH350 busters to bring the wall down and after running some trials with the Tyrolit bursting system, it was found to be safer, quicker and quieter.

There were 3 walls in total to burst, 2 at 70 metres long and 1 at 140 metres long. The walls were 2000mm deep at the base and 650mm deep at the top with a height of 6000mm.



**ABOVE** - Concrete section after bursting



**ABOVE** - The wall before the bursting commenced

The first step was to drill the walls at 3 different heights and depths. Using Tyrolit Hydrostress drill motors and stands, Cutting Force drilled 150 holes at the base and mid section of the wall and 75 holes at the top of the wall. Once this was done Cutting Force were able to use the busters which made quick work of the wall reducing it to manageable pieces. To achieve the 75 degree angles the WCE14 wire saw was perfect for the application.



**ABOVE** - Cameron demonstrating new wire saw equipment to Ronie and Colin



**ABOVE** - Installing a 500,000 liter storm water harvesting system



# ADVANCED SAWING & DRILLING – AUSTRALIA ON COLLINS

**Time frame: January 2015 estimated completion August 2015**

**Services: Road Sawing, Wall Sawing, Wire Sawing, Hand Sawing, Ring Sawing & Crane Work**

The *Advanced Sawing & Drilling* team have been working on the Australia On Collins project since October 2014. Collaborating with our client, Delta Demolition and construction group Built Pty Ltd, we have provided a variety of concrete cutting and drilling services. The major project focus has been on the structural removal of suspended slabs and beams, in addition to general concrete cutting and core drilling services.

Like with all projects of this scale, the *Advanced Sawing & Drilling* team continually call on our 20+ years of experience and expertise. In removing the suspended slabs, core holes are drilled first, then our road sawing equipment precisely cuts the perimeter, with precision crane work to follow, lifting out the suspended slabs and removing them. The size of the slabs are commonly 220mm thick and eight metres by four metres. Furthermore the team are often working on live edges (up to four floor drops in places), therefore requiring a certain level of care and skill. Once removed the suspended slabs are broken down for demolition and removal.

With the *Australian On Collins* project *Advanced Sawing & Drilling* have had to work around live gas mains, sewage and power. The building has a motel that continues to operate whilst this project is in progress. Working with live edges, has also meant an additional layer of planning, compliance and risk mitigation. Careful collaboration with Built and Delta Demolition has ensured all parties are operating within a safe and compliant environment (*Advanced Sawing & Drilling* cut and extract the slabs using harnesses and inertia reels as well managing some very complex crane work). In the difficult places, like tight corners and beams, there is often limited accessibility, *Advanced Sawing & Drilling* will use ring saws and hand sawing equipment to achieve the work (which on many occasions have also involved working on live edges).

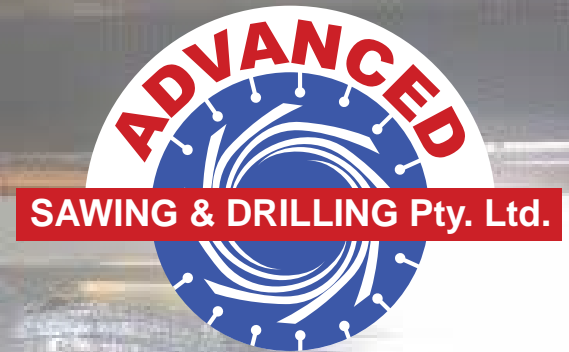
## ADVANCED SAWING & DRILLING COMPETITIVE EDGE

*Australia on Collins*, like other large construction projects, continue to allow our team to demonstrate our work and process efficiencies; our ability to work closely with the Built Constructions management team and Delta Demolition's foreman to deliver the program of work and keep the job program on track, shows and illustrates our versatility, experience and expertise.

Whether it is the size of the project, the confined space and crane workmanship or the suspended slab and live edging works, our team prides ourselves on rising to the occasion. Furthermore, we also pride ourselves on our no break down policy. *Advanced Sawing & Drilling* have back up equipment always available and experienced operators on call.

To know more about *Advanced Sawing & Drilling's* services and experience, including the *Australia On Collins* project in more detail, please contact Mark Horne, *Advanced Sawing & Drilling*. sales@advancedsawing.com.au phone: 03 9788 5000.

**BELOW - Total Remove In Progress**



**Trusted since 1993, with Australia's most complex concrete cutting, sawing and core drilling projects.**

## Why choose Advanced Sawing & Drilling?

- ▶ **Experienced and considered industry experts**
- ▶ **Big project specialists**
- ▶ **No breakdown policy, 100% back up equipment at the ready**
- ▶ **On time and on budget**
- ▶ **Full service offering, concrete cutting, sawing and drilling**



Accredited Contractor



**Call us 03 9788 5000  
or visit our website  
www.advancedsawing.com.au**



## TGD® FSX\*\*\* ROAD SAW BLADES

With its long life and astonishing cutting speed it's no wonder the industry is turning to the Tyrolit TGD® FSX\*\*\* road saw blade.

This blade has been designed to cut through concrete, steel reinforcement and to have a higher cutting rate and longer service life in Australia's harsh conditions. The TGD® technology behind the new FSX\*\*\* road saw blade is what gives the blade its impressive attributes. The abrasive diamond grains are distributed optimally in the segment, achieving a lifetime of consistently high cutting performance, which in turn improves the cutting speed, service life and versatility of the Tyrolit FSX\*\*\* road saw blade.



ABOVE - FSX\*\*\* Road Saw Blade

This blade was first tested in the Australian market in 2013. Now in 2015 this blade is taking the market by storm and quickly becoming the must have blade for all.

Designed with contractors who were looking for a greater quality road saw blade, each segment contains a higher concentration of diamond allowing for better performance when cutting through steel reinforcement.

When coupled with any 48hp or above road saw this FSX\*\*\* blade out performs and out lasts all other road saw blades on the market.

The technologies in this blade will reduce work times thanks to faster sawing, minimise tool costs as a result of an increase in tool service life, and lower maintenance costs due to minimal load on the machinery. In addition, tools with TGD® technology increase efficiency because they can be universally applied and are also suitable for special applications under extreme working conditions.

The future of road saw blades is now available, exclusively from Tyrolit.



# TYROLIT

## PROFESSIONAL DIAMOND TOOLS, MACHINERY & ABRASIVES



STIHL HTC HYDROSTRESS darda 92 DIAMOND PRODUCTS HYCON WEKA TGD®

1300 TYROLIT (897 654)

A Company of the SWAROVSKI Group

TYROLIT





## WSE811\*\*\* WALL SAW – INNOVATION & POWER

On Monday 11th of May the CSDAA held a local meeting at the TYROLIT Melbourne office. Here the members and staff got to see the WSE811\*\*\* in action. With a weight of only 25 kg the new WSE811\*\*\* is the lightest wall saw in its power range with a cutting depth of 315mm and allows accurate, reliable and powerful cutting without any compromises.

The WSE811\*\*\* is driven by a P2® motor this high-frequency technology reduces heat and motor speed, taking the strain off the machine's components and cutting maintenance requirements. Combining the WSE811\*\*\* with TYROLIT TGD® wall saw blades will ensure the best possible result and a high level of reliability.



**ABOVE** - WSE811\*\*\* - The lightest wall saw of its class

TYROLIT Hydrostress introduced the first fully hydraulic wall saw in early 1983. This highlight was followed shortly by the market launch of the world's first fully automatic small wall saw. Based in Switzerland, Hydrostress has been part of the TYROLIT Group since 2001 and regularly develops new products for concrete cutting, sawing and controlled demolitions. With the launch of the WSE811\*\*\* wall saw, TYROLIT Hydrostress once again demonstrates its pioneering role by allowing precise work at full power without compromising on compactness or usability.

What makes the WSE811\*\*\* stand out from the competition is the perfect balance between the weight and performance. With the saw head, control unit, and drive all being combined into a single package, this true lightweight machine has a maximum power output of 9kW at 16A with a total weight of 25kg. Due to the integrated design the wall saw operates with only one power supply and one water connection.

This perfectly co-ordinated, weight-optimised system comes equipped with a track and blade guard allowing for easy setup and take down, ensuring simple operation and maximum mobility when cutting windows and doors.

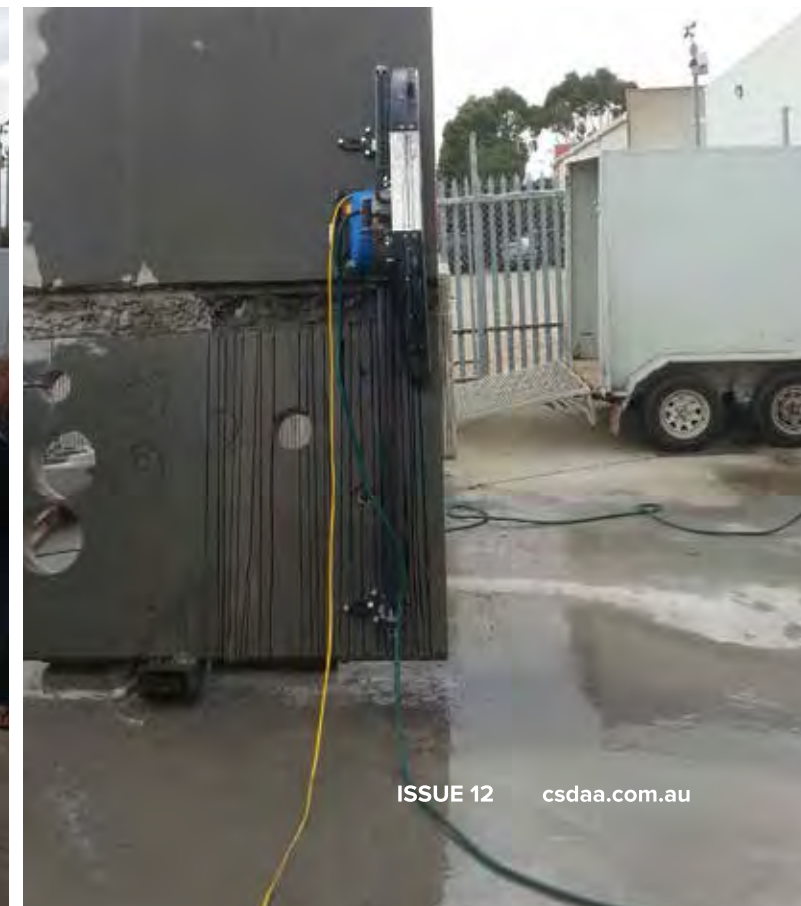
**ABOVE** - Compact and fully integrated design



**ABOVE** - Tracks and blade guard

**LEFT** - Easy to use with handy radio remote control

**NEXT PAGE** - In action  
WSE811\*\*\* - The lightest wall saw of it's class





# PICK YOUR POWER

Professional concrete cutting is about precision and power under all kinds of circumstances. The ICS line of high performance tools helps you meet a full range of applications. Now offering gas, hydraulic and air powered saws. No matter your platform, we have you covered.



**NEW!**

**6 9 5 X L**  
**GAS**



**NEW!**

**7 0 1 - A**  
**AIR**



**8 9 0 F 4**  
**HYDRAULIC**



**Austech Supplies Pty Ltd**  
Unit 12/197 Power Street  
Glendenning NSW 2761  
**CALL US: +612 98541200 for details**

**VISIT US: [austechsupplies.com.au](http://austechsupplies.com.au)**  
**for a complete list of all products**

© Copyright 2014-2015 ICS, Blount Inc. Privacy statement specifications subject to change without notice.

## ROSS RIVER BRIDGE DEMOLITION

COMPLETED MAY 2012

The Townsville Port Access Road project was well underway when builder Abigroup / Seymour Whyte Joint Venture were presented with an issue that needed immediate attention.

The construction of the road also required a new bridge be built across the Ross River, the major river in Townsville. During construction of one of the new headstocks for the bridge, one of the major concrete pours was rain affected and the engineers determined that the integrity of the headstock had been compromised and it would therefore require remediation works.

After investigative procedures were carried out, it was decided that the headstock would need to be totally removed and re-constructed. This meant over 300 tonnes of new concrete had to go, and it had to go quickly so as not to further delay the works program which had already suffered due to this problem.

The Project Manager contacted Cut & Core, a Melbourne based contractor who have carried out several major projects of this nature around the country. The brief was simple - approximately 80 square metres of wire sawing was required. What wasn't so simple was that the works needed to start in seven days time and be completed four days later!

### TIME WAS OBVIOUSLY OF THE ESSENCE

So logistics were the first point of order. Immediately following the initial contact, methodology was discussed and agreed upon, then freight and on site conditions needed to be addressed. Cut & Core director Neil Horne headed to Townsville the following day to address the onsite logistics, while the team in Melbourne prepared all the necessary equipment for freight in order to meet the deadline. Due to the tight works program, it was decided that back up machinery should be available on site, so this was also prepared and packed.



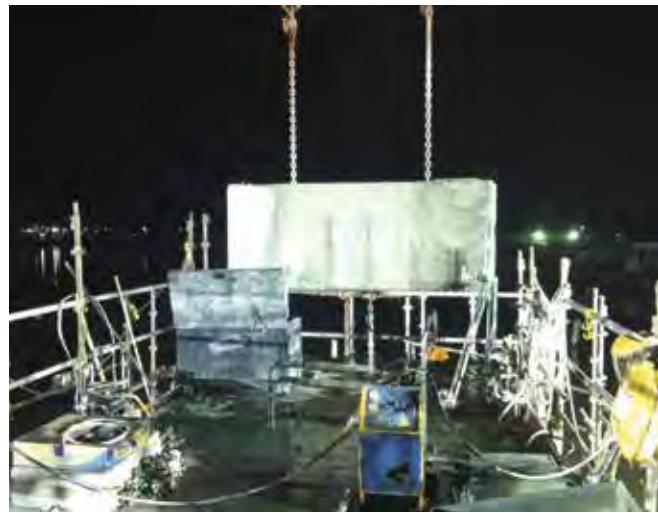
**ABOVE** - A 100 tonne block is lifted away



The equipment was freighted within 36 hours of the initial phone call being made, and the project was underway.

To get the works underway immediately, local contractor Townsville Concrete Sawing & Core Drilling were engaged to carry out all the coring required to feed wire through the headstock. The sheer size of the concrete to be removed dictated that it must be done in several blocks, and with some of the cut faces being up to 7 metres long, the drilling component alone was considerable.

Once on site it was all systems go. The works were directly over the main water way in Townsville, so environmental controls were essential. A large “catch tray” was built around the base of the headstock and monitored throughout the cutting process. This was effective and trouble free for the duration of the works, with the river water unaffected by the works.



**ABOVE** - As blocks were removed the workspace got smaller, and busier

Wire sawing commenced as planned, with Cut & Core running two wire saws simultaneously. Smaller perimeter blocks were isolated initially and lifted away by crane. These “smaller” blocks weighed in at around 15-20 ton per block, and the processes employed were proving effective. Once perimeter blocks were removed the main sections had to be removed, and this entailed some bigger cut surfaces with some cuts exceeding 15 square metres.



**ABOVE** - Wire Sawing allowed for various cut depths and lengths

The works progressed around the clock with two crews, and continued without fault. Wire saw progress was good, with better than 1 square metre an hour being achieved, including set up times. Given the heavy steel reinforcing in the bridge this production was considered significant. Heavy lift studies were undertaken for the larger blocks which were to be removed next. The largest block weighing just under 100 tons was slung to the crane and wire sawing commenced for its removal.

Crane load was constantly monitored throughout the cutting process and did not alter other than as expected. The wire saw cuts required to isolate this block were both approximately 8 square metres, and both progressed at almost identical speed.

**BELOW** - A happy operator points out some of the issues that caused the removal of the headstock



As each cut neared completion, progress was monitored intently to ensure that both cuts were completed simultaneously. Both of these cuts had been placed on a slight angle to ensure that the block would lift freely, and this meant that no additional load would be placed on the crane once the block was isolated.

**BELOW** - Teamwork - scaffolders, crane crew and wire saw operators worked seamlessly to achieve the optimum outcome on this project



The bulk of the headstock had now been removed well ahead of projected program. The client then decided that wire sawing should continue until the end of the original cutting program, which gave the benefit of removing far more concrete by means of wire saw, without hindering program. An additional 30 square metres was cut



**ABOVE** - Another large block removed - the dogman gives a good indication of the size of the block

Job specifics:

- Mobilisation time from initial contact was 7 days.
- Total duration of works was 4 days.
- Total metres of wire sawing was 114 square metres.
- Total weight of concrete removed was over 300 tons.

Cut & Core is a Melbourne based company who service all of Australia and the Pacific Region, including remote access projects. Recent projects have been undertaken in Derby WA, Darwin NT, Central Tasmania, Far North Queensland, Central South Australia, and the Pacific Island country of Nauru. As well major projects, Cut & Core also service all of Victoria on a day to day basis from domestic applications to major infrastructure projects.

Contact:

Neil Horne

0409 421 446

neil@cutandcore.com.au

PO BOX 1149, Huntingdale, VIC 3166

PH: (03) 9543 4949

www.cutandcore.com.au





Our mission at Hydro Construction products is to supply the right products and service to our clients to assist **building success and success in building**. Hydro Construction Products launched its expansion into the concrete cutting sector under owner Ian Turner.

Formed in 2003, Hydro was acquired by Turner in full in 2013 and has grown to become one of Australia's and New Zealand's pre-eminent suppliers of construction products.

Hydro Construction Products is a supplier of leading brands such as Arix, Ehwa Pentrunder, Stihl, ICS, Promac, Lavina, Kerrick, Darda and the exclusive supplier of LISSMAC which has become an international market leader in the area of concrete cutting technology.

"We have established ourselves as being a 1 stop shop using a combination of suppliers and

distributors and experience enables Hydro to provide choice to our customers whether it be for blades, core bits, drilling equipment, floor preparation, bench saws, hand saws, road Saws, hydraulic equipment, generators, compaction equipment, vacuum cleaners or wall & wire saws or even mechanical repairs," said Turner.

Hydro has also a **NEW** complete range of Hydro branded blades and machinery to compliment the already diversified range.

Hydro has offices and warehouses in Brisbane, Sydney and Melbourne with key staff and a network of distributors across Australia and New Zealand. For further information please call **1300 GO HYDRO** or visit their website

[www.hydrocp.com.au](http://www.hydrocp.com.au)

Drain | Stainless | Cablepit | Covers | Grates & Frames | Diamond Tools

Hydro Construction Products is proud to bring you...

HYDRO  
CONSTRUCTION PRODUCTS  
Diamond Tools

HYDRO DIAMOND TOOLS is our range of high quality stone cutting and masonry equipment sourced from leading brands such as Arix, Pentrunder, Stihl, ICS, Promac, Lavina, Kerrick, Darda and LISSMAC.

#### OUR PRODUCT RANGE INCLUDES:

- Bench saws • Blades • Compaction Equipment
- Core Bits • Drilling Equipment • Floor Preparation
- Generators • Hand Saws • Hydraulic Equipment
- Road Saws • Vacuum Cleaners • Wall & Wire Saws

Call toll free 1300 GO HYDRO to find the right product for your next project.



## WHERE TO FROM HERE?

## UNSURE OF A SUITABLE CAREER PATH?

WHY NOT CONSIDER THE SPECIALISED TRADE OF CONCRETE SAWING AND DRILLING

### WHAT IS A SCHOOL BASED TRAINEESHIP?

It is an opportunity for a school student to combine a traineeship with school studies as part of a later years program whilst at school. The traineeship provides paid employment under a Federal or State award or agreement, which sets out their wage and conditions of employment. A school based traineeship in concrete sawing and drilling can usually take up to two years to complete.

### WHAT IS CONCRETE SAWING & DRILLING?

Concrete sawing & drilling is a specialised trade providing unique services within the construction industry. A variety of services are supplied by professional operators to provide solutions for penetrations and openings in wall and floor structures to name just a few. Concrete sawing and drilling most importantly provides a safe and efficient means to achieve deconstruction and controlled demolition services. As a trainee you will learn the various skills and knowledge to safely operate these systems of plant and enhance your career path along the way.

### BENEFITS OF A TRAINEESHIP

- ✓ Award wages whilst undertaking training
- ✓ Professional training and assessments
- ✓ Accreditation on completion
- ✓ Travel and independence
- ✓ New technology
- ✓ New skills and independence

### ASSOCIATIONS MANAGEMENT

If you would like more information on a career in concrete sawing & drilling please contact the CSDAA at Level 2, 441 St Kilda Road, Melbourne 3004, Australia P.O. Box 7622 Melbourne Vic. 3004 [associations@aigroup.com.au](mailto:associations@aigroup.com.au) [www.aigroup.com.au](http://www.aigroup.com.au) (03) 9867 0227 (03) 9867 0157



### WHY CHOOSE A TRAINEESHIP?

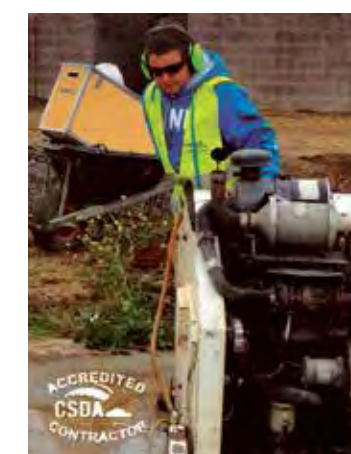
A school based traineeship gives a student the opportunity to learn a new set of skills over a period of time, which can lead to full time employment at the end of the course. Students will have their traineeship registered through an RTO who will administer the training plan and monitor the progress during your time. School based traineeships also provides students with credits towards their VCE or VCAL programs and can count into the ATAR calculation. The traineeship will be one day a week during the normal course of the school week for a period set out in the training plan.

### EMPLOYER EXPECTATIONS

Acquiring the skill set of a professional operator takes time and is an investment on your employers behalf. Achieving a return on this investment is a two way partnership which will require on your behalf the following attributes;

- Reliability
- Honesty
- Commitment
- Physical aptitude for manual labour
- Common sense and safe work ethic

TAKE A FEW MINUTES TO CONSIDER YOUR FUTURE







Husqvarna FS 5000 & FS 7000 are the **ONLY EPA Tier 4 emissions compliant, large flatsaws on the market.**



Husqvarna DXR 310 & DCR 300 Crusher.

## The game changing PRIME™ system now has an extraordinary Core Drilling experience!

**THE HUSQVARNA DM 650 & DS 900 DRILL STAND** is our most powerful and versatile electric drilling solution equipped with the high frequency PRIME™ technology. The high power output, low weight user-friendly setup and intelligent design makes the perfect choice for heavy-duty applications. The DS 900 uses the same column as the WS 400 range wallsaws making it interchangeable and flexible.



Husqvarna DM 650 Core Drill & DS 900 Drill Stand.



**Powerful. Revolutionary. Intelligent. Modular. Electric - That's PRIME™.**

## Leading the way in powerful, Tier 4 compliant Flatsaws and Safe, Vibration and water free Robotic Demolition.

**HUSQVARNA FS 5000 & FS 7000.**  
Introducing a cleaner generation of best-in-class floor saws. We believe in helping you to accomplish more. Our new generation floor saws offer you more power on the blade shaft while the updated electronic tracking control helps you get a straighter cut, with less body fatigue. Working faster and cleaner is now possible.

**HUSQVARNA DXR 310 & DCR 300 CRUSHER** is our largest and most powerful remote demolition solution. The DCR 300 ideal for a variety of applications and can easily crush up to 400 mm of material with its 430mm wide jaw. DXR 310 is light and powerful and can manoeuvre into the tightest of spaces, while remaining stable thanks to individually controlled outriggers.

**HUSQVARNA CONSTRUCTION PRODUCTS**  
[www.husqvarnacp.com.au](http://www.husqvarnacp.com.au)

Copyright © 2013 Husqvarna AB (publ). All rights reserved. Husqvarna is a registered trademark of Husqvarna AB (publ).





# WHY IS CSDAA FOCUSING HEAVILY ON TRAINING YOUR EMPLOYEES?

- Increased Efficiency
- Reduce Downtime
- Enhance Safety
- Maximum Profitability
- Improve Job Security



For more information visit: [www.csdaa.com.au](http://www.csdaa.com.au)



(03) 9867 0227

## A lifetime of advantages for Victorian sawing and drilling contractors.

**Frankston Toyota brings a lifetime of advantages to your business.**

From a great deal today to low cost, capped price servicing, lower running costs and even Guaranteed Future Value\*, Frankston Toyota have you and your business covered.

Contact our Fleet Manager  
**Joe Esmaty** on (03) 9783 8877  
or mobile 0402 393 711



**Frankston Toyota**

1-4 Wells Road Frankston, Vic 3199 T 9783 8877  
[frankstontoyota.com.au](http://frankstontoyota.com.au) LMCT447



\*Guaranteed Future Value (GFV) is the minimum value of your new Toyota at the end of your finance contract, as determined by Toyota Finance. Subject to fair wear and tear conditions and agreed kilometres being met. Always seek your financial advice to determine whether Toyota Access is appropriate for your circumstances. Terms and conditions, fees and charges apply. Available to approved customers of Toyota Finance.

WHAT IS A GPR

25

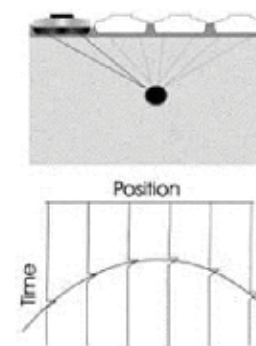
## WHAT IS GPR?

- Acronym for Ground Penetrating Radar
- Ground can be soil, rock, concrete, wood - anything non-metallic
- Emits a pulse into the ground
- Records echoes
- Builds an image from the echoes

Ground Penetrating Radar (GPR) is the general term applied to techniques which employ radio waves, typically in the 1 to 1000 MHz frequency range, to map structures and features buried in the ground (or in man-made structures). Historically, GPR was primarily focused on mapping structures in the ground; more recently GPR has been used in non-destructive testing of non-metallic structures.

The concept of applying radio waves to probe the internal structure of the ground is not new. Without doubt the most successful early work in this area was the use of radio echo sounders to map the thickness of ice sheets in the Arctic and Antarctic and sound the thickness of glaciers. Work with GPR in non-ice environments started in the early 1970s. Early work focused on permafrost soil applications.

GPR applications are limited only by the imagination and availability of suitable instrumentation. These days, GPR is being used in many different areas including locating buried utilities, mine site evaluation, forensic investigations, archaeological digs, searching for buried land mines and unexploded ordnance, and measuring snow and ice thickness and quality for ski slope management and avalanche prediction, to name a few.



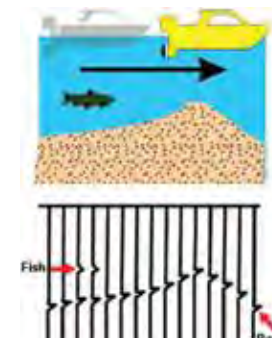
### How does it work?

1. Emits weak radio frequency signals
2. Detects the echoes sent back and uses them to build an image
3. Displays signal time delay and strength

### GPR is just like a fish finder & echo sounder

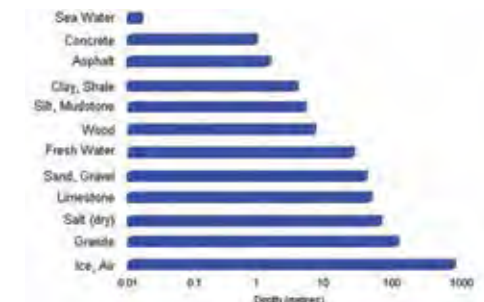


1. The finder sends out a ping
2. Signal is scattered back from the fish
3. Signal is scattered back from the bottom



1. As the boat moves it collects recordings
2. The recordings are displayed side by side
3. The result looks like a cross section

### GPR Exploration Depths



### Exploration depth is site specific

- Soils absorb radio waves
- Sands and gravel are favourable for GPR
- Fine grained soils such as silt and clay absorb signals
- Salty water is totally opaque

### Get concrete images on-the-spot in minutes, before cutting or drilling

GPR can quickly create detailed scans of concrete floors, decks, columns, walls and ceilings to locate embedded rebar, post tension cables, metallic and non-metallic conduits, and current carrying power cables. The high performance GPR sensor provides accurate results. High quality depth slice images are processed and can be interpreted right in the field.



### Concrete Scanning Capabilities

- Line Scanning for reconnaissance surveys to get a quick idea of what's in the concrete and locate current-carrying cables
- Grid Scanning for detailed mapping and on-site 3D imaging to better visualize embedded objects
- Multiple grid sizes available in metric (mm) and imperial (inches) units
- Power Cable Detector: Ensure safety by locating current carrying cables in the area (one scan, two technologies)
- Real-time locating of embedded objects - high quality depth slice images are processed and can be interpreted right in the field.
- Pinpoint targets using the backup arrow
- On-screen drill locator to position core

### Applications

- Locate rebar
- Locate wire mesh
- Locate metallic and non-metallic conduits
- Locate post tension cables
- Locate current-carrying power cables
- Detect voids
- Detect areas of potential corrosion and delamination
- Measure cover depth
- Locate other objects embedded in concrete





# WHATS ON FOR 2015?

Come, see and try the latest equipment by Industry Leaders in Diamond Tools and Machinery Technology at the Hilton, South Wharf in Melbourne. Participate in plans to grow our **INDUSTRY** to all users of our products and services. Keep up with the latest product **DEVELOPMENTS** direct from your Industries top suppliers. Wind up the convention by celebrating **OKTOBERFEST** with your industry peers!



**15-17 OCTOBER**  
HILTON SOUTH WHARF, MELBOURNE



**PROUD  
SPONSORS**



## CSDAA CONVENTION PROGRAM

### THURSDAY, 15th October 2015

12 Noon THURSDAY PM BUMP IN FOR EXHIBITORS MIDDAY.  
4.30 – 6.30 pm Conference Registration Desk Open ( Hilton Terrace Bar )  
Hilton Terrace Bar Open Sponsored by Kalington Diamond Tools and Yellow Brick Road, Andrew Morrello Welcome.

### FRIDAY 16th October

8.00 am Conference Registration Open  
9.00 am Conference Opening and President Address  
9.15 am Update on Certification Training – CSDAA President, Jason Franken  
9.45 am “Living the Dream” Andrew Morello  
10.30 am Morning Tea  
11.00 am Supplier Insights. 5 special minutes from every Exhibitor.  
12.30 pm Trade Exhibition Opens and Working Lunch  
1.30 pm Trade Exhibition continues  
3.00 pm CSDAA Online Software Support - Steven Brendish, 2Dam Creative  
3.30 pm Afternoon Tea  
4.00 pm Business Management & Growth Strategies. AIG  
5.00 pm Meet & Greet Happy Hour in Trade Exhibition  
6.30 pm Welcome BBQ in Trade Exhibition Sponsored by Husqvarna Const. Products  
9.30 pm Exhibition & BBQ Close

### SATURDAY 17th October

8.30am. Registration desk open.  
9.30 am Trade Exhibition Opens  
10.00 am Key Note Speaker - Roger La Salle, Matrix Thinking  
11.00 am Morning Tea  
11.30 am Trade Exhibitions continues  
12.45 pm Working Lunch in Trade Exhibition  
1.30 pm Demolition Robotics Best Practices - Brokk Sweden and Husqvarna  
2.30 pm Ground Penetrating Radar Best Practices.  
3.00 pm Afternoon Tea  
3.30 pm An hour of Laughs with LEHMO  
4.30 pm Happy Hour Sponsored by Traxx Construction Products  
5.30 pm ‘Toss the Boss’ - (Heads) President pays for the round, (tails) You do!  
6.00 pm Day 2 Close  
7.00 pm Gala Dinner at Munich Brauhaus, South Wharf Sponsored by Tyrolit



GUEST SPEAKER - ROGER LA SALLE

The creator of the Matrix Thinking technique, Roger La Salle's diverse business focus spans innovation, opportunity creation, strategy and entrepreneurship. He is the author of four books and Director and former CEO of the Innovation Centre of Victoria (INNOVIC) as well as a number of companies both in Australian and overseas.

An electronic engineer with postgraduate business qualifications, Roger has been responsible for a number of successful technology startups. In 2004, he was a regular panelist on the ABC's New Inventors program, and the following year he was appointed Chair of Innovation at The Queens University in Belfast.

Roger's Matrix Thinking technique is now used in more than 26 countries and is licensed to Deloitte, one of the world's largest consulting firms.



See more of Rogers  
"Matrix Thinking"™ at  
www.matrixthinking.com



Andrew is now the Head of Business Development at Yellow Brick Road Wealth Management.

GUEST SPEAKER- ANDREW MORELLO

Andrew Morello won the hit television show The Apprentice with Mark Bouris.

He admits that this is the first time he's ever been a "wage earner", having started his first business at the age of 14, Andrew Morello is now working with the famous Mark Bouris at Yellow Brick Road Wealth Management.

Being an entrepreneur at heart, Andrew personifies what it means to be an intreprenuer; an entrepreneur within a business. As a 29 year old success story, Gen Ys can learn from his example.

"I treat this business as if it's my own." Andrew tells me indicating that he has a certain level of ownership over what he's doing at Yellow Brick Road.

Andrew argues that intreprenuers will typically work harder than the average employee because they're bringing a results focused approach to what they do. However this doesn't have to mean working longer hours. "It's not necessarily about the hours you put in either, it more comes down to productivity and the quality of your work."

Andrew explains that given the media attention that's been aimed toward Gen Y, it's important Gen Ys differentiate themselves and get in a place where opportunity can see them. "It's very easy at universities and at tafe colleges to fall into the mix, just to become another number, another student and you've all got your degree at the end of it and you're all standing there with your hats and your robes and then you all go out and your fighting against each other in the job market."

GUEST SPEAKER- Anthony LEHMO Lehmann

Something special to finish off our annual conference.

Lehmo, is a comedian extraordinaire.

Amongst his many accomplishments is his former holding of the Guinness World Record for most jokes told in an hour.

Lehmo currently stars on Channel 10's "Before the Game" and "The Project" as well as his regular radio Brig and Lehmo Breakfast Radio show.

EXPECT a hilarious finale to our event.



➔ ACCOMMODATION  
HILTON, SOUTH WHARF - MELBOURNE

Each of the stylish guest rooms, suites and executive rooms in the Hilton Melbourne South Wharf hotel have been innovatively designed and are inspired by the forms and tones of the iconic Yarra River.

Take in panoramic views of the bay or bustling city from stunning floor to ceiling windows, unwind in the oversized bathroom or surf the web with WiFi.

ACCOMMODATION RATES

King Hilton Guest Room Plus	\$ 360.00
King City View Room	\$ 390.00
King Bed Relaxation Suite	\$ 611.00

Please contact Emmett Green at the Hilton, South Wharf to book the best rate (quoting the booking code) on (03) 9027 2017.



FOR THE BEST RATE  
WHEN BOOKING  
Quote code: GCSDA.

Hilton, South Wharf: (03) 9027 2017



2015 CSDAA CONVENTION  
15 - 17 October, 2015  
Hilton South Wharf, Melbourne

REGISTRATION FORM

Please indicate below your selections and participant numbers below.

PLEASE FILL IN YOUR DETAILS

NAME	COMPANY		
ADDRESS			
TELEPHONE	FAX	EMAIL	

CONFERENCE EVENTS

	TICKET COST	NO. OF TICKETS	TOTAL
Full Delegate Pass (incl. BBQ, Gala Dinner, Trade Shows, Business Sessions, Morning / Afternoon Teas, Lunch and Happy Hour for ALL days).	\$495	X	\$
Friday, 16 October 2015			
Operator Day Pass (incl. Trade Show, Business Sessions, Morning / Afternoon Teas, Lunch and Happy Hour for one day only).	\$100	X	\$
Exhibition BBQ	\$140	X	\$
Saturday, 17 October 2015			
Operator Day Pass (incl. Trade Show, Business Sessions, Morning / Afternoon Teas, Lunch and Happy Hour for one day only).	\$100	X	\$
Gala Dinner at Munich Brauhaus	\$180	X	\$
		GRAND TOTAL	\$

CONFERENCE ATTENDEES

NAME	COMPANY	FULL	DAY 1	BBQ	DAY 2	GALA
		<input type="checkbox"/>	<input type="checkbox"/>	<input type="checkbox"/>	<input type="checkbox"/>	<input type="checkbox"/>
		<input type="checkbox"/>	<input type="checkbox"/>	<input type="checkbox"/>	<input type="checkbox"/>	<input type="checkbox"/>
		<input type="checkbox"/>	<input type="checkbox"/>	<input type="checkbox"/>	<input type="checkbox"/>	<input type="checkbox"/>
		<input type="checkbox"/>	<input type="checkbox"/>	<input type="checkbox"/>	<input type="checkbox"/>	<input type="checkbox"/>
		<input type="checkbox"/>	<input type="checkbox"/>	<input type="checkbox"/>	<input type="checkbox"/>	<input type="checkbox"/>

PAYMENT DETAILS

Fax your booking form to (03) 9867 0157 to reserve your places or email: associations@aigroup.com.au

To confirm your booking, forward a cheque with your booking form to Associations - AI Group, P.O. Box 7622, Melbourne Vic. 3004

CREDIT CARD DETAILS

Note: We do not accept American Express or Diners.

VISA card ☐ Mastercard ☐ Please charge this amount to my credit card \$

Card No.     (Please fill in ALL details)

Exp. Date  CVV No.

Name on Card  Signature of Card Holder

A tax invoice / confirmation of your booking will be forwarded on receipt of payment.



CONCRETE SAWING AND DRILLING ASSOCIATION OF AUSTRALIA



# WHY TRAINING MATTERS

**Why bother with training? – you might well ask yourself, especially in the harsh economic times.**

Training is often the first victim of cutbacks in a business when in fact it should be the last. A well trained team will improve productivity for your business. A well trained team will understand how to do their job correctly and safely.

**Training is not just about meeting your legal requirement.**

## TRAINING WILL HELP TO:

- Prevent Injury to the person
- Prevent Damage to equipment and property
- Increase Efficiency

## CORRECT TRAINING ALSO HELPS BY:

- Increasing job knowledge
- Increasing skills ability
- Increasing competency and confidence
- Decreasing risks.



## Who Needs Training? EVERYONE.

The Concrete Sawing & Drilling Association of Australia believe a training course on its own does not work, it is the participants that put their learning to work when they are back in their own environment – that's when training works.

Developing a culture of training and understanding the benefits that it can bring will deliver increased profits to any organisation time and time again.



The CSDAA has developed a unique training qualification specific to the sawing and drilling industry. Choosing this accredited training for your organisation is an important step and should be seen as an investment rather than an additional expense. We can then agree that a training program serves the interests of every member within your company. The training will be delivered under contract by a registered RTO with the facility and resources to deliver RPL assessment nationally. The important thing is that there is now an accredited course that delivers this specialised industry training.



Concrete Sawing & Drilling Association - Australia  
Level 2, 441 St Kilda Road, Melbourne 3004  
PO Box 7622, Melbourne VIC 3004

Phone: (03) 9867 0227  
info@csdaa.com.au  
www.csdaa.com.au



**TRAXX CONSTRUCTION PRODUCTS** is essentially a group of individuals that share the same Passion, Innovation and Excellence traits. Traxx is a fully Franchised operation where you, the customer, deal with the owner of the business.

Our business is the supply of quality, innovative and competitively priced diamond tools and associated machinery. In essence, machinery that typically consumes diamond tools.

We have also formed a division that supplies complimentary tools to the respective industries we deal with that we call Specialised Machinery.

Primarily the customer of TRAXX will be a consumer of goods involved in the Concrete Sawing and Drilling, Rental, Demolition, Concrete Placement, Construction, Tiling, Surface Preparation and Stone processing industries.

TRAXX manufacturers many of its own products but reserves the right to source the very latest and innovative additions to the construction industry, from a vast network of PREMIER business partners.

**CONTACT US**  
1300 109 108

Melbourne. Sydney. Brisbane. Perth. Adelaide. Hobart and Darwin.  
HEAD OFFICE - Unit 4/1 Rocklea Drive Port Melbourne Victoria Australia 3207  
Phone: 1300 109 108 | T: +61 (0) 3 9646 9200 | E: info@traxxcp.com.au |  
www.traxxcp.com.au

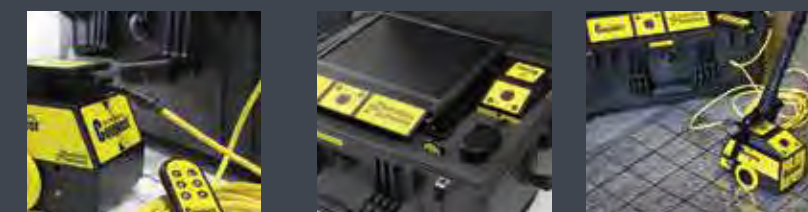


**Conquest**

**On-site concrete imaging**  
Ground penetrating radar (GPR), designed specifically for the concrete sawing and drilling professional.

**24/7/365 DISCOVER THE DIFFERENCE**  
ALL TRAXX EQUIPMENT IS SUPPORTED 24/7/365

Designed for non-destructive inspection of concrete, Conquest uses radio waves and electromagnetic signals to detect structures in concrete. Results are provided on site, in real time.



TRAXX CONSTRUCTION PRODUCTS.  
Head Office Unit 4/1 Rocklea Drive, Port Melbourne Victoria Australia, 3207 Phone  
1300 109 108 | T: +61 (0) 3 9646 9200 | E: info@traxxcp.com.au  
**WWW.TRAXXCP.COM.AU**







THE OFFICIAL MAGAZINE OF THE CONCRETE SAWING & DRILLING ASSOCIATION AUSTRALIA

# DIAMONDS

## ADVERTISING



Advertising in Diamonds magazine is the only way to reach the specialty market of sawing and drilling contractors who cut concrete, asphalt or masonry because it is the only magazine in the market specifically targeted to this segment of the sawing and drilling industry.

### How Do You Reach 5000+ Concrete Professionals?

Each issue of Diamonds magazine is sent to more than 500 operators, equipment manufacturers and suppliers to the concrete cutting, polishing and imaging industry and more than 4,000 specifiers of these services.

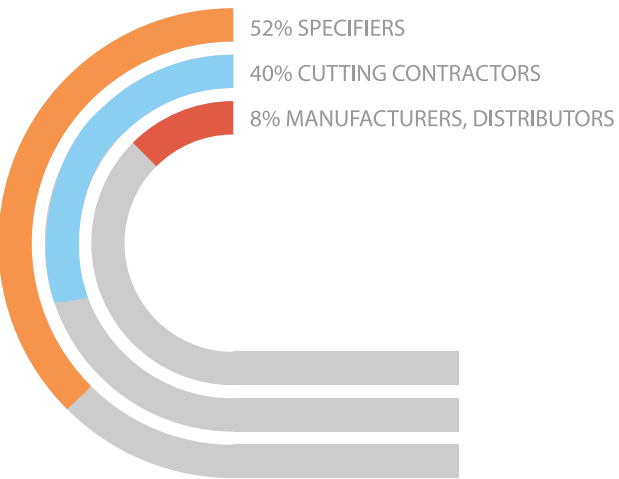
### Who Reads the Magazine?

As well as specifiers of sawing and drilling services, including engineers, architects, general contractors and governmental agencies. Why waste your message on unnecessary circulation? Advertising in Diamonds guarantees a targeted audience of industry professionals.

### CSDAA Diamonds Website

Diamonds has its own website. Advertisers have direct links to their websites placed on our Advertisers page as a complimentary addition to ad placement. A full page-turning copy of the magazine, including ads, is also available for visitors to read on the website. Visitors to the site can now access our advertisers at the touch of a button.

### READERSHIP BY PROFESSION



### Readership Per Issue

A poll of Diamonds subscribers revealed that 66% pass on their copy of the magazine to at least one other person, with almost 25% stating that the magazine is passed on to four or more people each issue. This translates to an average of four people reading each issue of the magazine for a total readership per year of approximately 60,000.

### Circulation

3,000+	Per issue - Hard Copy
11,000+	Member and prospective member companies made up of sawing and drilling contractors, manufacturers, distributors and affiliates
7,000+	General contractors, engineers, architects and government officials who specify sawing and drilling

### CONTACT US FOR YOUR PRESS KIT AND MORE INFORMATION

#### Concrete Sawing & Drilling Association - Australia

Associations- AI Group  
Level 2, 441 St Kilda Road,  
Melbourne 3004

Phone: (03) 9867 0227

Fax: (03) 9867 0157

Email: [info@csdaa.com.au](mailto:info@csdaa.com.au)

Web: [www.csdaa.com.au](http://www.csdaa.com.au)







# TOOWOOMBA TAKES OFF

Consaw Services won the sawing and coring works at the recently constructed Brisbane West Wellcamp Airport, in Toowoomba Queensland.



The project consisted of 1150 lineal metres of floor sawing between 600 mm and 750mm deep, these were the run offs where

the paving machine had ended its pour. In addition to that we were tasked with sawing 22,000 lineal metres of joint widening between 6mm and 8mm wide and also 800 of 35mm diameter horizontal holes 300mm deep.

Earth Friendly Concrete was used for the construction of all heavy duty pavements in the aircraft turning areas, including

1. The turning node at the end of the runway - 16,000m<sup>2</sup>, 435mm thick
2. Taxi-way and apron at terminal - 32,000m<sup>2</sup>, 435mm thick (600 - 750mm thick in pavement run off).

With an ambitious construction time frame set, the plant was at times delivering close to 120m<sup>3</sup> per hour when pouring commenced, this required Consaw Services to have at least 2 men on site for the full 6 month construction period. What separates this job from the others is it was the first time Earth Friendly Concrete (EFC) had been used in a major construction. Developed in house by the owners of the airport, the Wagner family, they were able to reach 45MPa within 30 hours of the concrete being laid.

What is interesting about this concrete is that it sets from the outside - in, not from the inside to out, as with normal concrete. The EFC mix used in this project follows some 9 years of developing a commercial geopolymer concrete product that can be produced and handled in a similar manner to normal concrete. EFC has a binder made from the chemical activation of GGBS and fly ash. Purpose made plasticizing admixtures give it the necessary workability and slump retention for production,

delivery and placement using standard practice. Conventional chemical admixtures based on Portland cement chemistry have very little effect on the more alkaline geopolymer concrete.



And in many circumstances traditional sawing techniques, such as soffcutting and green sawing had to be rethought. It was a challenge for our company but something thoroughly enjoyed.

The project was completed on time by Consaw Services and to the satisfaction of the Wagner family, who have been our clients for close to 30 years, and we are still engaged in ongoing projects with them.

**BELOW** - Husqvarna - 8400 Horsepower at work



**NEXT PAGE (TOP)** - Toowoomba Wellcamp airport by night

**NEXT PAGE (BOTTOM)** - Husqvarna - 6600 Horsepower at work





# NEW PRODUCTS

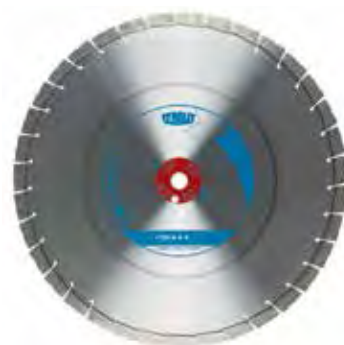
## WSE811

With a weight of only 25 kg the new WSE811\*\*\* is the lightest wall saw in its power range and enables reliable cutting without any compromises. [www.tyrolit.com](http://www.tyrolit.com)



## FSX Roadsaw Blade

This blade has been designed to cut through concrete, steel reinforcement and to have a higher cutting rate and longer service life in Australia's harsh conditions. The TGD® abrasive diamond grains are distributed optimally in the segment, achieving a lifetime of consistently high cutting performance, improving cutting speed, service life and versatility. [www.tyrolit.com](http://www.tyrolit.com)



## HSX Handsaw Blade

With years of experience in the production and application of handsaw blades Tyrolit has been able to innovate the simple Hand saw blade. By applying TGD® technology this blade can be used on both reinforced and normal concrete all while having a longer cutting life and reducing the load on the operator. [www.tyrolit.com](http://www.tyrolit.com)



## The Hilti X-Change module

The Hilti X-Change module takes cost effective productivity and flexibility to a new level. Featuring a click-and-lock mechanism, the Hilti X-Change module allows core bit re-tipping in a few simple steps directly on the jobsite. Tackle multiple specifications and different base materials and leave the bulk behind: its removable tip makes it easy for you to load all that you need for diamond drilling consumables in one portable bag. “



COMING  
SOON

## Husqvarna K 6500 Chain – an efficient and light weight PRIME™ product

Husqvarna's popular PRIME™ family is expanding with a new member. K 6500 Chain easily manages deep and narrow cuts, as well as square corners. The power cutter is perfect to use separately or as a complement to wall sawing to avoid over cutting at corners. [www.husqvarna.com](http://www.husqvarna.com)



## TRAXX Monkey Fist. The new concrete leverage anchor

This is a new patented device for removing pre-sawn concrete slabs without using a breaker. Designed to quickly remove sections of concrete bridge decks, repair road beds or renovate floor space in buildings. The Monkey Fist works similar to a wedge anchor, but is reusable. Simply core drill a 20" hole in or near the center of the piece to be removed (for balance), insert the Monkey Fist and lift the slab out. To recover the Monkey Fist just lift the release handle, remove and reuse. [www.traxxcp.com.au](http://www.traxxcp.com.au)



## New Husqvarna DS 900 - robust drill stand for big diameter core drilling

Husqvarna now introduces a new drill stand for big diameter core drilling. The DS 900 drill stand is the perfect match to the DM 650 core drill – part of the PRIME™ product range.

The DS 900 design uses the proven and robust WS 400 wall saw column. This brings a flexible system set for demanding applications. It is the evident choice for professionals with high demands. [www.husqvarna.com](http://www.husqvarna.com)



## TRAXX New Conquest 100 - hands-on data collection

Experience hands-on data collection, discover the very latest innovation in concrete scanning GPR and learn how to improve your business profitability.

Conquest 100 creates detailed scans of concrete floors, decks, columns, walls and ceilings to locate embedded rebar, post tension cables, metallic and non-metallic conduits, and current carrying power cables. [www.traxxcp.com.au](http://www.traxxcp.com.au)



## TRAXX K50 - for fastening drill bases or wallsaws

Screw straight into the concrete, remove, and use time and time again. For fastening drill bases or wallsaws or for lifting concrete blocks. [www.traxxcp.com.au](http://www.traxxcp.com.au)





## RAY THOMSON CSDAA LIFE MEMBERSHIP

### A Supporter of the Association from the very beginning ...



Recognition of Ray Thomson's contribution to the concrete sawing and drilling industry was made last week when he was awarded Life Membership of the Concrete Sawing & Drilling Association of Australia which was presented by President Jason Franken at the CSDAA AGM in Melbourne.

**ABOVE-** Ray Thompson and Jason Franken

A copy of Jason Franken's presentation below:

Ray Thomson commenced his sawing and drilling career in 1973 with a company called Concrete Testing.

In 1979, in partnership with Glenn Street from Concrete Testing, Ray started GR Condriil, several months later saw a name change to Australian Concrete Drilling & Sawing or 'A.C.D.S.', the business was located in Carlton, Victoria.

1981 saw an expansion of A.C.D.S. with the purchase in April that year of Gippsland Brick & Concrete Sawing in Traralgon. Ray relocated the family to grow this business during the power station boom in Gippsland. The business was later renamed Gippsland Concrete Drilling & Sawing. Glenn Street opened a branch of A.C.D.S. on the Gold Coast and Ian Thomson, Ray's younger brother was employed as the manager of A.C.D.S. in Melbourne.

In 1982 Glenn and Ray parted ways with each retaining their individual businesses and closing down A.C.D.S. In the process Ray started Auscut in September 1982 as a partnership between himself, Ian and Ray's wife's brother-in-law and as sole owner after the passing of both partners in recent years.

Ray has worked on numerous challenging projects throughout Australia as a partner and owner of Auscut. Ray has provided many employees with an opportunity to develop and enhance specialist trade skills and is held in high esteem of his fellow peers. Ray's dedication to improving the sawing and drilling industry nationally is evident through his time served on the Executive Committee of the CSDAA since 2006.

**BELOW-** Ray Thomson Chadstone Shopping Centre 1987



In 1980 an unofficial meeting of the four main companies in Melbourne, A.C.D.S., Concut, Smith & Osborne and ACE took place at Vados restaurant in Richmond with the aim of trying to establish an association. Almost fifteen years later in December 1995, the Industrial Diamond Association (IDAA) was founded with Auscut being one of the original members of this association which later changed its name to the Concrete Cutting Industry Association (CCIA) and subsequently the Concrete Sawing & Drilling Association of Australia (CSDAA). Auscut is also an Overseas Contractor member of the Concrete Sawing & Drilling Association (CSDA) based in the USA and has been so for many, many years.

A supporter of the Association from the very beginning, with record attendance at CSDAA meetings around the country, Ray has always had a strong belief in putting his support behind the industry association for the benefit of our industry, he also likes to liven things up with his mischievous ways and in his younger days received the pants down award at a CSDAA Gala dinner after locking himself out of his hotel room at Penrith wearing nothing but his birthday suit.



**ABOVE-** Award Ceremony



## STAYING POSITIVE IN A NEGATIVE WORLD.

**Be careful to protect your mind during challenging times. Remember, what you focus on is what you will receive!**

### THE STORY OF THE HOT DOG MAN

A man who lived by the side of the road and sold hot dogs was hard of hearing, so he had no radio. He had trouble with his eyes, so he didn't read the newspapers.

But he sold good hot dogs. He put up signs on the highway advertising them and stood on the side of the road and cried, "Buy a hot dog, Mister?" And people bought his hot dogs. He increased his meat and bun orders and bought a bigger stove to take care of his trade.

He finally got his son to come home from university to help out. **But then something happened.** "Father haven't you been listening to the radio?" his son asked. "Haven't you been reading the newspaper?" There's a world recession and war has erupted in the Middle East. People are losing there jobs."

Whereupon the father thought, "Well my son has been to university, he reads the papers and listens to the radio, and he ought to know".

So the father cut down his meat and bun orders, took down his signs and no longer bothered to stand out by the highway to sell his hot dogs. His sales fell over night.

"Your right, son," the father said to the boy, "We certainly are in the middle of a big recession."

In order to improve your attitude here a couple of simple tips:

- Be thankful for what you have.

Focus on what is good in your life at that moment; your friends family and life style.

- Hang around the right people.

You can't soar like an eagle when you hang around with Turkeys.

- Invest in yourself.

Be a student of people, learn, read books, listen to CDs in your car. Invest in your mind. Grow daily

- Believe in yourself.

Never forget your self-worth: invest daily in positive self- talk and affirmations.





## INDUSTRY DATES

### 2015

#### SEPTEMBER

07	<b>QLD State Meeting</b> Brisbane, Queensland	13:00 - 14:00
14	<b>VIC/TAS State Meeting (Lunch)</b> South Melbourne, Victoria	11:30 - 14:30
14	<b>WA State Meeting</b> Perth, Western Australia	11:30 - 14:30
14	<b>NSW State Meeting</b> Sydney, New South Wales	13:00 - 14:00
21	<b>SA State Meeting</b> Adelaide, South Australia	13:00 - 14:00

#### OCTOBER

15-17	<b>CSDAA Tech Fair</b> Melbourne, Victoria
-------	---

### 2015

#### DECEMBER

04	<b>Executive Meeting</b> The Sebel, 60 Royal Street, East Perth, Western Australia	10:00 - 17:00
04	<b>CSDAA Dinner</b> The Sebel, 60 Royal Street, East Perth, Western Australia	17:00 - 18:30
04	<b>General Meeting</b> The Sebel, 60 Royal Street, East Perth, Western Australia	19:00 - 21:30

### 2016

#### FEBRUARY

	<b>CSDAA Annual General Meeting</b> Date and time to be advised,	
02-05	<b>World of Concrete</b> Las Vegas, Nevada USA	

## ADVERTISER'S LIST

To receive additional information about products advertised in this publication, contact the vendors below:

PAGE	ADVERTISER	PHONE	EMAIL / WEB
Inside Cover, 31, 41	Traxx Construction Products	1300 109 108	info@traxxcp.com.au
24, 25	Husqvarna Construction Products	1300 487 782	info.cp@husqvarna.com
3, 13	Tyrolit Australia	1300 897 654	info.au@tyrolit.com
16	ICS Diamond Tools	(03) 9854 1200	www.icsdiamondtools.com
3	Supercity	0418 520 311	supercity@bigpond.com
6	Brokk	(08) 8387 7742	www.brokkaustralia.com.au
5	Gelmaxx	0409 427 101	www.gelmaxx.com.au
20	Hydro Construction Products	1300 468 796	www.hydrocp.com.au
22	Frankston Toyota	(03) 9783 8877	www.frankstontoyota.com.au
11	Advanced Sawing & Drilling	(03) 9788 5000	www.advancedsawing.com.au
Back Page	Nexgen Construction Supplies	1300 366 662	www.nexgencs.com.au

# K50®

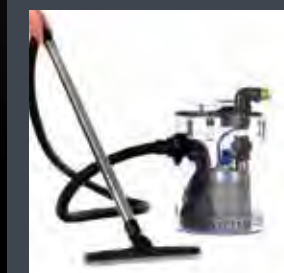
## THE INNOVATORS...



## release K50® to AUSTRALIA



Screw straight into the concrete, remove, and use time and time again. For fastening drill bases or wall saws or for lifting concrete blocks.



**K50** slurry separator allows you to vacuum up any slurry produced through sawing, drilling or grinding, using any vacuum, and pump away to any storage receptacle.



**K50** offer a range of flange nuts including our spring loaded version. Perfect for fastening drill stands or wall or wire saws or combined with our lifting brackets for removal of concrete and masonry. **Never break your quick release couplings again.**

TRAXX CONSTRUCTION PRODUCTS.  
Head Office Unit 4/1 Rocklea Drive, Port Melbourne Victoria Australia, 3207 Phone  
1300 109 108 | T: +61 (0) 3 9646 9200 | E: info@traxxcp.com.au

**WWW.TRAXXCP.COM.AU**







CSDAA IS AN ASSOCIATION OF CONTRACTORS, MANUFACTURER AND AFFILIATED MEMBER COMPANIES FROM THE CONCRETE SAWING &DRILLING INDUSTRY. ITS MISSION IS TO PROMOTE PROFESSIONAL SAWING AND DRILLING CONTRACTORS AND SYSTEMS OF WORK.

TO FURTHER DEVELOP OUR ASSOCIATION WE ARE SUPPORTINGTHE CONCRETE FLOOR PREPARATION, GRINDING AND POLISHING SECTOR.

MEMBER BENEFITS:

Health and Safety Management Plan Manual

Members can access the Health and Safety Management Plan Manual. The manual complies with current Australian legislation, regulation and codes of practice, and will greatly reduce the time required when completing tenders. The manual provides current information that directly relates to the cutting professional. This innovative product has been developed by industry professionals in concrete cutting, construction and the health, safety and risk management sectors.

Industry SWM's

Members can access industry specific SWMS to ensure members are aware of the legal obligations and to meet the needs of their customers sites. SWMS are editable to allow for all information to be included that is relevant to the work site. SWMS are reviewed annually.

WHS Handbook

The Work Health and Safety (WHS) Handbook has been developed to provide a practical guide for establishing and maintaining safe work principles within the industry, and to promote safe work practices by managers, supervisors and employees. These safety guidelines when implemented will set best practice for the cutting and drilling industry nationally.

Networking at State, National Meetings and the AGM

Meetings are a great opportunity to network with cutting professionals to establish new and consolidate existing relationships.

Cooperation and Support from Industry Associations

The CSDAA and its members are members of leading international associations. Working with the Australian Industry Group the CSDAA has access to employment, OH&S and business experts to support CSDAA members.

Affiliations with the following Int Associations:

- Industrial Diamond Association of America
- International Association of Concrete Drilling and Sawing – Europe
- The Drilling & Sawing Association Limited – UK

Diamonds Magazine, Newsletter & Website

The Diamonds magazine is the only professional cutters magazine dedicated to concrete cutting with national distribution across Australia, offering Members the opportunity to write articles and/or advertise.

The Cutter Newsletter is distributed quarterly to all members advising on individual state industry activity, and changes that are impacting operators. The newsletter also includes advertising.

The CSDAA web site has loads of useful information, providing access to meeting minutes, forums and technical information.

Membership Directory

The CSDAA Membership Directory is available on the web site where you can access like-minded professionals.

Member Surveys

The CSDAA conduct regular member surveys to collect valuable information from members to guide and further develop the Association.

Further Information

Please visit our web site [www.csdaa.com.au](http://www.csdaa.com.au).

FURTHER INFORMATION

Please call a member of the Executive Committee in your state.

**Queensland:**  
Catherine Thomson  
(07) 3274 3803

**New South Wales/Australian Capital Territory:**  
Scott Hanley  
(02) 9905 8188

**Victoria/Tasmania/Northern Territory:**  
Jason Franken  
(03) 5248 8009

**South Australia/Western Australia:**  
Will Visser  
(08) 8387 7742

(PLEASE ENSURE YOU TICK ONE BOX AND SIGN)

- CSDAA New Member Application

CSDAA Upgrade Member Application

CSDAA Renewal and details have **not** changed

CSDAA Renewal & Updating current membership details
- ☐☐☐☐

COMPANY INFORMATION

(\*MUST COMPLETE)

COMPANY NAME\*

ABN\*

REGISTERED ADDRESS\*

SUBURB

STATE

P/CODE

POSTAL ADDRESS\*

SUBURB

STATE

P/CODE

CSDAA AUTHORISED CONTACT DETAILS

POSITION\*

ACCOUNTS CONTACT\*

PHONE

FAX

MOBILE\*

EMAIL\*

WEBSITE\*

MEMBERSHIP CATEGORY & PAYMENT

ANNUAL

PLEASE TICK ☒

PAY BY THE MONTH

PLEASE TICK & COMPLETE  
ADDITIONAL FUNDING  
DOCUMENTS ☒

CONTRACTOR:

BRONZE - ANNUAL \$475.00

☐

BRONZE - PAY BY THE MONTH#

\$51.08 PER MONTH X 10 PAYMENTS

☐

Membership listing on CSDAA web site  
Bi monthly subscription to newsletter  
Free subscription to CSDA magazine  
Free subscription to CSDAA magazine  
Invitation to quarterly general meetings

SILVER - ANNUAL \$1,475.00

☐

SILVER - PAY BY THE MONTH#

\$156.60 PER MONTH X 10 PAYMENTS

☐

Membership listing on CSDAA web site  
Bi monthly subscription to newsletter  
Free subscription to CSDA magazine  
Free subscription to CSDAA magazine  
Invitation to quarterly general meetings  
New electronic CSDDA manual formatted to your company  
Access to SWM's library

GOLD - ACCREDITED \$1,775.00 (ANNUAL)

☐

SILVER - PAY BY THE MONTH#

\$190.86 PER MONTH X 10 PAYMENTS

☐

Membership listing on CSDAA web site, including logo  
Bi monthly subscription to newsletter  
Free subscription to CSDA magazine  
Free subscription to CSDAA magazine  
Invitation to quarterly general meetings  
New electronic CSDAA manual formatted to your company  
Listed on monthly data base send out to all major building company estimators Australia Wide

ACCREDITATION CRITERIA

- Must renew electronic manual agreement on a yearly basis – **Must be paid within 10 days of invoice being sent**
- Maintains \$20,000,000.00 commercial/public liability insurance – **Certificate of Currency**
- Maintains work cover insurance to cover all employees – **Certificate of Currency**
- Has a recognised employment agreement with their employees – **Copy of FWA Approval**



- Is an incorporated company, partnership or trust with a registered ABN – **Copy of Business Registration form**
- Is compliant with all State/Federal awards associated with employment agreements – **Copy of Signature page in agreement OR applicable award**
- Contributes a minimum 9% superannuation or above to employee choice of fund – **Names of contributing funds, employee names and numbers**
- Maintains comprehensive insurance for all vehicles operated by contractor – **Certificate of Currency**
- Maintains all records within the CSDAA electronic manual for annual auditing purposes – **Compliance obligations**
- Completes and submits audit report within 30 days of membership renewal – **Compliance obligations**

It is essential that ALL information is provided at the time of application or renewal, as processing will not commence until all documentation has been received by the CSDAA.

DISTRIBUTOR/SUPPLIER:

1. DISTRIBUTOR/SUPPLIER - \$900 (ANNUAL)

☐
- DISTRIBUTOR - PAY BY THE MONTH#

\$96.80 PER MONTH X 10 PAYMENTS

☐
- Bi monthly subscription to newsletter with free logo space
  - Banner and link to your web site\*\*
  - Free subscription to CSDA magazine
  - Free subscription to CSDAA magazine
  - Invitation to quarterly general meetings
  - Accreditation and online manual access are
  - Optional for suppliers/distributors, if approved an additional charge applies

ENTRANCE FEE (ONCE OFF FEE)

PLEASE TICK ☒

Diamond Tool Distributor & Supplier	\$200 <input type="checkbox"/>
Supplier to the Concrete Cutting Industry	\$200 <input type="checkbox"/>
Concrete Cutting Contractor	\$200 <input type="checkbox"/>
Grinding Contractor	\$200 <input type="checkbox"/>
Flooring/Grinding Contractor	\$21.50 p/m <input type="checkbox"/>

TO BE A MEMBER YOU MUST BE FINANCIAL

I / We hereby apply to be admitted as a Member of the Concrete Sawing & Drilling Association Australia.  
ABN 58 640 253 979  
NAME OF AUTHORISED PERSON PLEASE PRINT

SIGNATURE OF AUTHORISED PERSON

DATE

CSDAA USE ONLY

Date Received: \_\_\_\_\_  
Member No: \_\_\_\_\_

TO APPLY FOR A NEW, UPGRADE OR RENEWAL MEMBERSHIP:

Please send application form and your payment or EFT receipt to:

FAX: 03 9867 0157  
EMAIL: info@csdaa.com.au  
MAIL: CSDAA  
c/o AI Group  
PO Box 7622, Melbourne, VIC 3004

METHODS OF PAYMENT

Annual payments can be paid by EFT, Credit Card or Cheque.

EFT

Concrete Sawing and Drilling Association Australia

National Australia Bank  
BSB 082 141  
ACC 17-250-0407

CREDIT CARD

Please note we do not accept AMEX or Diners Credit Cards

NAME ON CARD

AMOUNT TO BE CHARGED

CC NUMBER

EXPIRY DATE

SIGNATURE

CHEQUE -PAYABLE TO CONCRETE SAWING AND DRILLING ASSOCIATION AUSTRALIA INCORPORATED

Please include a cheque for the applicable amount. If your Application is approved by the Executive Committee, the payment will be processed. If your application is declined, the cheque will be returned to you.

ADDITIONAL INFORMATION

If applying for GOLD Membership please ensure ALL of the additional information is included so that the renewal can be processed within 3 working days. Processing will only commence once all the information has been provided, including payment.

# If you choose the Pay by the Month payment option please download and complete the following forms:

- QPR Direct Debit Request (download & complete)

- Direct Debit Service Agreement (download)

The first payment will include a one off \$60 establishment fee (includes GST), and the remaining 9 payments will be as stated for your selected Membership type.

Accepted? \_\_\_\_\_

If yes, date: \_\_\_\_\_

CSDAA MEMBER LISTING

AUSTRALIAN CAPITAL TERRITORY (ACT)

All-saw concrete cutting.

NEW SOUTH WALES (NSW)

A-1 Concrete Services Pty Ltd.

Arrow Concrete Cutting Pty Ltd

Arthur’s Concrete Cutting.

B & G Concrete Sawing & Drilling

Condroll.

Crosscut Concrete Sawing and Drilling.

Decotec Pty Ltd.

Diacore.

Dymacut Pty Ltd.

Envirocut Pty Ltd.

Ezi-Cut and Cure.

Forefront Services.

Ideal Concrete Cutting.

Mastercut Concrete Australia.

Matt Dalley Concrete Cuttings.

Northwest Concrete Sawing & Drilling.

Nova Cut Concrete Sawing Pty Ltd.

Online Concrete Cutting Services Pty Ltd.

Oz Cut Concrete Cutting Services Pty Ltd.

Ripa Concrete Cutting Pty Ltd.

Roosta Concreting.

Stocks & Hogan Core & Saw.

Supercut Concrete Services Pty Ltd.

Sure-Cut.

The Chamakos Group Pty Ltd.

QUEENSLAND (QLD)

Advanced Concrete Cutting and Drilling.

All City Sawing And Drilling Qld.

Ablecut Concrete Cutting & Coring.

ACCU-Cut.

Allcut Concrete Cutting (QLD) Pty Ltd.

Allied Concrete Cutting & Drilling Pty Ltd.

Complete Concrete Cuttings QLD.

Condroll Services Pty Ltd.

Consaw Services.

CQ Drilling & Sawing (Gladstone).

Cut and Core QLD.

Elliott & Fyfe Concrete Cutting Service.

F1 Group Pty Ltd

Fast Cut QLD Pty Ltd.

Fraser Coast Concrete Sawing.

Pearson Concrete & Asphalt  
Sawing & Drilling.

Procut Concrete Cutting and Drilling  
Pty Ltd.

QLD Concrete Drilling and  
Sawing Pty Ltd.

Razor Cut Concrete Cutting & Drilling  
Pty Ltd.

Southern Cross Concrete Cutting.

Southside Concrete Sawing and Drilling.

Sunshine Coast Concrete and Asphalt.

Townsville Concrete Sawing & Core  
Drilling Pty Ltd.

Westside Concrete Cutting Pty Ltd.

SOUTH AUSTRALIA (SA)

Breakaway Concrete Cutting & Drilling  
(SA) P/L.

C & N Concrete Sawing & Drilling P/L.  
Supercore.

VICTORIA (VIC)

Ace Concrete Sawing Pty Ltd.

Advanced Sawing & Drilling Pty Ltd.

All City Sawing & Drilling.

Ascot Concrete Cutting and Drilling.

Auscut.

Aussie Sawing and Drilling.

Big Cut Sawing and Drilling.

Concore Sawing & Drilling Pty Ltd.

Concut (VIC) Pty Ltd.

Conquest Cutting & Drilling.

Cut and Clean (L.M. and L.M. Knight Pty  
Ltd.).

Cut and Core VIC.

Cutting Force.

Kustom Cut Concrete Cutting and Drilling  
Pty Ltd.

LJ Diamond Tools Australia.

Metro Sawing and Drilling.

Melbourne Concrete Cutting Pty Ltd

Power Concrete Cutting Pty Ltd.

Prestige Saw Pty Ltd.

Smith & Osborne (Vic) Pty Ltd.

Super City Concrete Cutting Pty Ltd.

Wylies Concrete Cutting.

Yarra Valley Sawing.

WESTERN AUSTRALIA (WA)

Advance Drilling and Sawing.

Concut (WA) Pty Ltd.

Concrete Cutting Solutions.

Cut Master.

Cut N Break Pty Ltd.

Cutwell Concrete Sawing & Drilling.

Diamond Cut Concrete.

Kwik Cut and Coring Pty Ltd.

Maintenance and Construction Services  
Australia.

Sledgehammer Concrete Cutting  
Services.

South West Concrete Cutting & Drilling.

Supercut (WA) Pty Ltd.

NORTHERN TERRITORY (NT)

Super City Concrete Cutting

TASMANIA (TAS)

Bay Hire Precision Drilling.

MPH Contracting.

Schouten Concrete Constructions Pty Ltd.

Southern Concrete Cutting.

Van Dieman Diamond.

SUPPLIERS / DISTRIBUTORS

Austech Supplies Pty Ltd.

Brokk Australia Pty Ltd.

Crozier Diamond Tools.

Cutting Edge Diamond Tools Pty Ltd.

Hilti Australia.

Husqvarna Australia Pty Ltd.

Kalington International Development Co.

Kennards Concrete Care Pty Ltd.

National Finance and Insurance.

Nexgen Construction Supplies.

Stihl Pty Ltd.

Syntec Diamond Tools Pty Ltd.

Traxx Construction Products.

Tyrolit Pty Ltd.

KEY

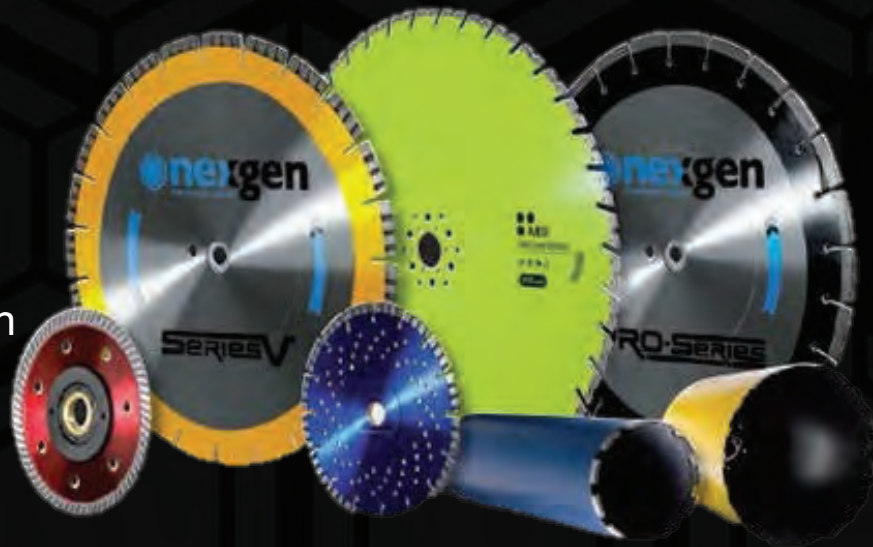
GOLD MEMBERS

DIAMOND MEMBERS



**EXPERT ADVICE • EXCEPTIONAL QUALITY • GREAT SERVICE**

As one of Australia's leading diamond tool suppliers, Nexgen Construction Supplies Australia brings expert advice, exceptional products and with over 100 years in accumulated knowledge of the industry, you are sure to get the best in the business



We focus on continuous development and improvement, allowing us to bring you the best performing Diamond Tools in the Industry at competitive prices.



Experience the Nexgen difference,  
visit one of our branches today.